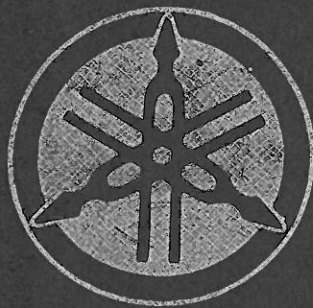
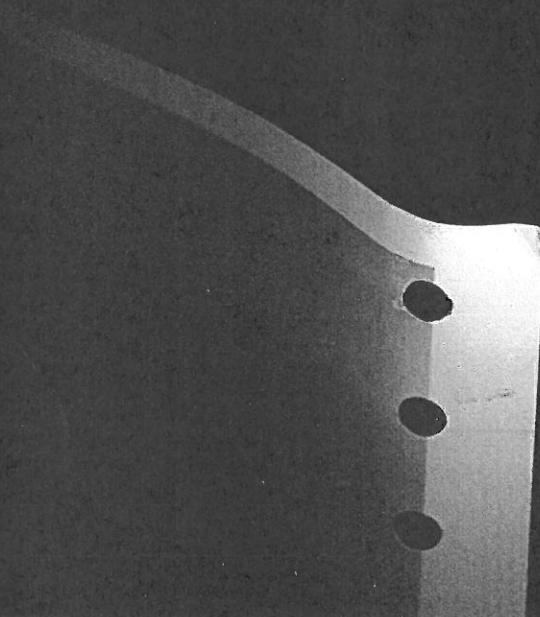
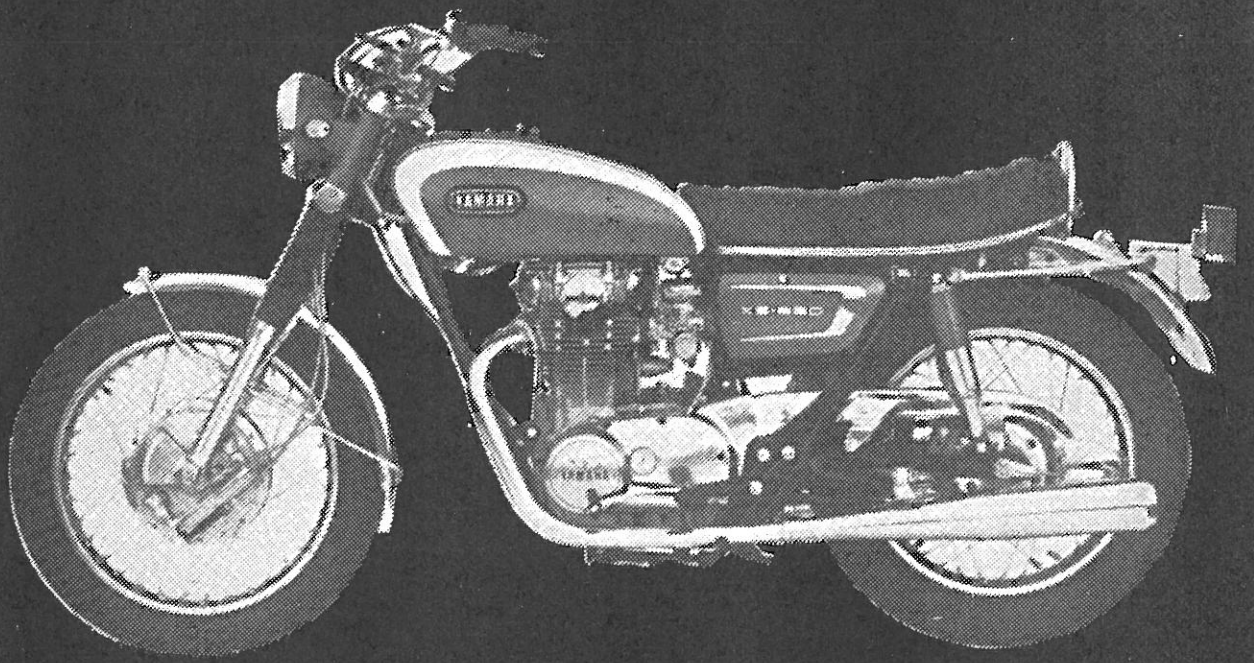


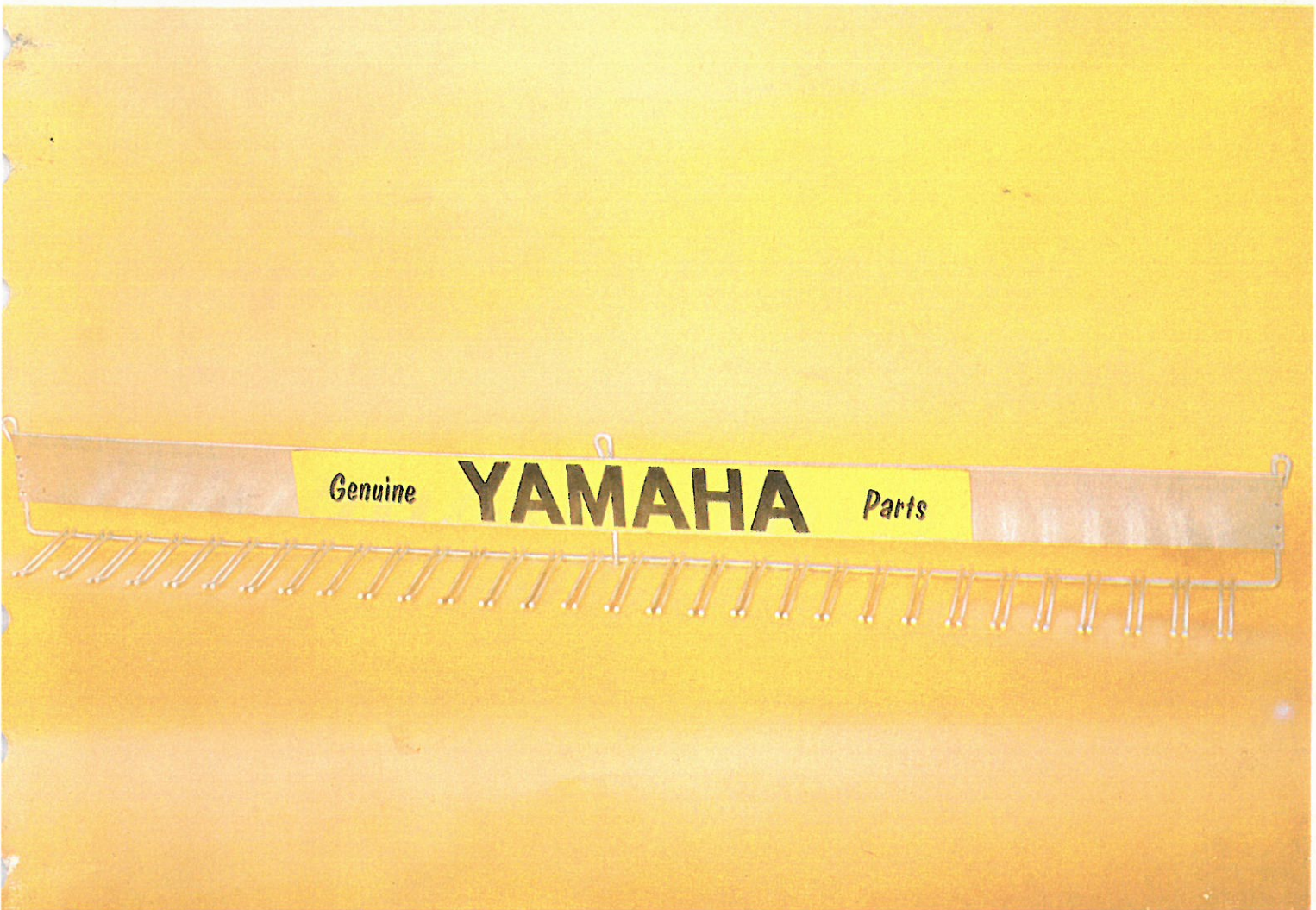
**YAMAHA**



**ACCESSORIES**







## CABLE RACKS

These racks are 5" x 48" with storage capacity for a minimum of 120 cables.

Mounted side by side behind your parts counter, these racks will help improve the appearance and organization of your Parts Department. Sold in sets of two.

<b>PART No.</b>	<b>DESCRIPTION</b>
ACC-11000-14-00	Rack, Cable Storage







# YAMAHA "007" SAFETY HELMETS

Completely safety engineered with clean, sharp styling is the only way to describe this lightweight beauty. Meets or exceeds the State Approved Z90-1 Spec. and is AMA Approved. Also approved nationally where required by State Law for cyclists.

## SPECIFICATIONS

OUTER SHELL	Injection molded Thermoplastic. Latest in technology for uniform quality production.
SIZING LINER	High Impact Styrene Foam.
FASTENERS & SNAPS	Bright Nickel-plated Brass.
FITTING PADS	Trylon-Nylon Open Mesh Weave Backed with Urethane Foam.
CHIN STRAP	Tubular Nylon Webbing.
EDGE TRIM	Spring Clamp, Soft Vinyl Coated Bead.
COLORS	White, Gold, Red, Blue and Green Metalflake.
SIZES	Small, Medium and Large. (Extra Large available on special order only.)

PART NO.	DESCRIPTION	REMARKS
ACC-11000-01	Small	6 <sup>5</sup> / <sub>8</sub> to 6 <sup>7</sup> / <sub>8</sub> head size
ACC-11000-02	Medium	7 to 7 <sup>3</sup> / <sub>8</sub>
ACC-11000-03	Large	7 <sup>1</sup> / <sub>2</sub> to 7 <sup>3</sup> / <sub>4</sub>
	22 Metalflake Red	
	36 WHITE	
	44 Metalflake Blue	
	64 Metalflake Green	
	65 Metalflake Gold	

### EXAMPLE:

ACC-11000-01-22 Indicates a Small Metalflake Red Helmet  
ACC-11000-03-44 Indicates a Large Metalflake Blue Helmet

# YAMAHA "007" SAFETY HELMETS

Completely safety engineered with clean, sharp styling is the only way to describe this lightweight beauty. Meets or exceeds the State Approved Z90-1 Spec. and is AMA Approved. Also approved nationally where required by State Law for cyclists.

## SPECIFICATIONS

OUTER SHELL	Injection molded Thermoplastic. Latest in technology for uniform quality production.
SIZING LINER	High Impact Styrene Foam.
FASTENERS & SNAPS	Bright Nickel-plated Brass.
FITTING PADS	Trylon-Nylon Open Mesh Weave Backed with Urethane Foam.
CHIN STRAP	Tubular Nylon Webbing.
EDGE TRIM	Spring Clamp, Soft Vinyl Coated Bead.
COLORS	White, Gold, Red, Blue and Green Metalflake.
SIZES	Small, Medium and Large. (Extra Large available on special order only.)

PART NO.	DESCRIPTION	REMARKS
ACC-11000-01	Small	6 <sup>5</sup> / <sub>8</sub> to 6 <sup>7</sup> / <sub>8</sub> head size
ACC-11000-02	Medium	7 to 7 <sup>3</sup> / <sub>8</sub>
ACC-11000-03	Large	7 <sup>1</sup> / <sub>2</sub> to 7 <sup>3</sup> / <sub>4</sub>
	22 Metalflake Red	
	36 WHITE	
	44 Metalflake Blue	
	64 Metalflake Green	
	65 Metalflake Gold	

### EXAMPLE:

ACC-11000-01-22 Indicates a Small Metalflake Red Helmet







# SNAP-ON BUBBLE SHIELD

Easily snaps onto most helmets. Streamlined bubble shape reduces drag and turbulence. Offers strong resistance against blows from clods, rocks and other flying obstacles. Tested at speeds in excess of 200 mph. Allows the helmet to be turned 90° to the airflow without buffeting, even at high speeds. Shield can be snapped on or off in seconds. Lots of room for eye glasses. Special optical quality plastic insures distortion-free vision. Shatter resistant. Designed for safety as well as utility and attractiveness. In case of emergency, shield can be removed instantly without damage. Protective beading. Lens is .060" butyrate. Also available with black sunshade to reduce glare.

TINTS: Clear, Light Blue, Light Amber, Yellow, Smoke.

<b>CATALOG NO.</b>	<b>DESCRIPTION</b>
ACC-11000-12-01	Bubble Shield (Clear)
ACC-11000-12-02	Bubble Shield (Light Blue)
ACC-11000-12-03	Bubble Shield (Light Amber)
ACC-11000-12-04	Bubble Shield (Yellow)
ACC-11000-12-05	Bubble Shield (Smoke)

# COMP SHIELD

This standard style acetate shield is especially sturdy and is very popular among racers. The optical plastic lens has no distortion and has an exclusive beading that eliminates rough edges. The Paulson Comp Shield may be worn in comfort over eye glasses. This is a 5-snap flat shield with a double snap to accommodate either the Paulson flat or bubble visor. It is quickly snapped onto practically any helmet made with a visor. Thickness is .040".

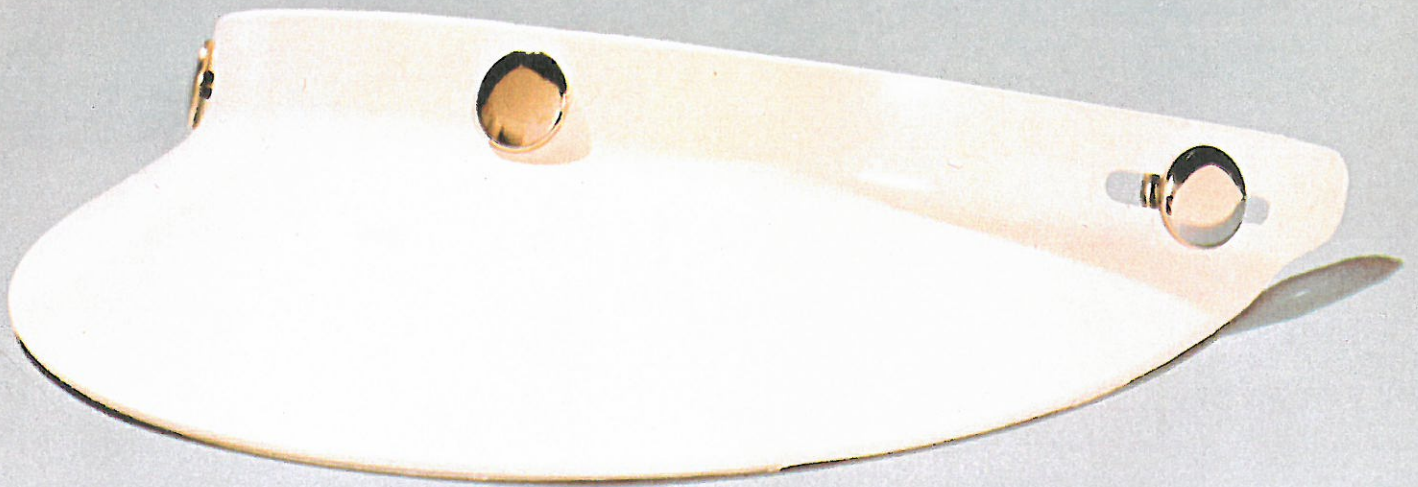
## SPECIFICATIONS

LENGTH: 17¼"

TINTS: (All Models) Clear, Smoke, Light Blue, Light Yellow, Light Amber

<b>CATALOG NO.</b>	<b>DESCRIPTION</b>
ACC-11000-09-01	Comp Shield (Clear)
ACC-11000-09-05	Comp Shield (Smoke)
ACC-11000-09-02	Comp Shield (Light Blue)
ACC-11000-09-04	Comp Shield (Light Yellow)
ACC-11000-09-03	Comp Shield (Light Amber)







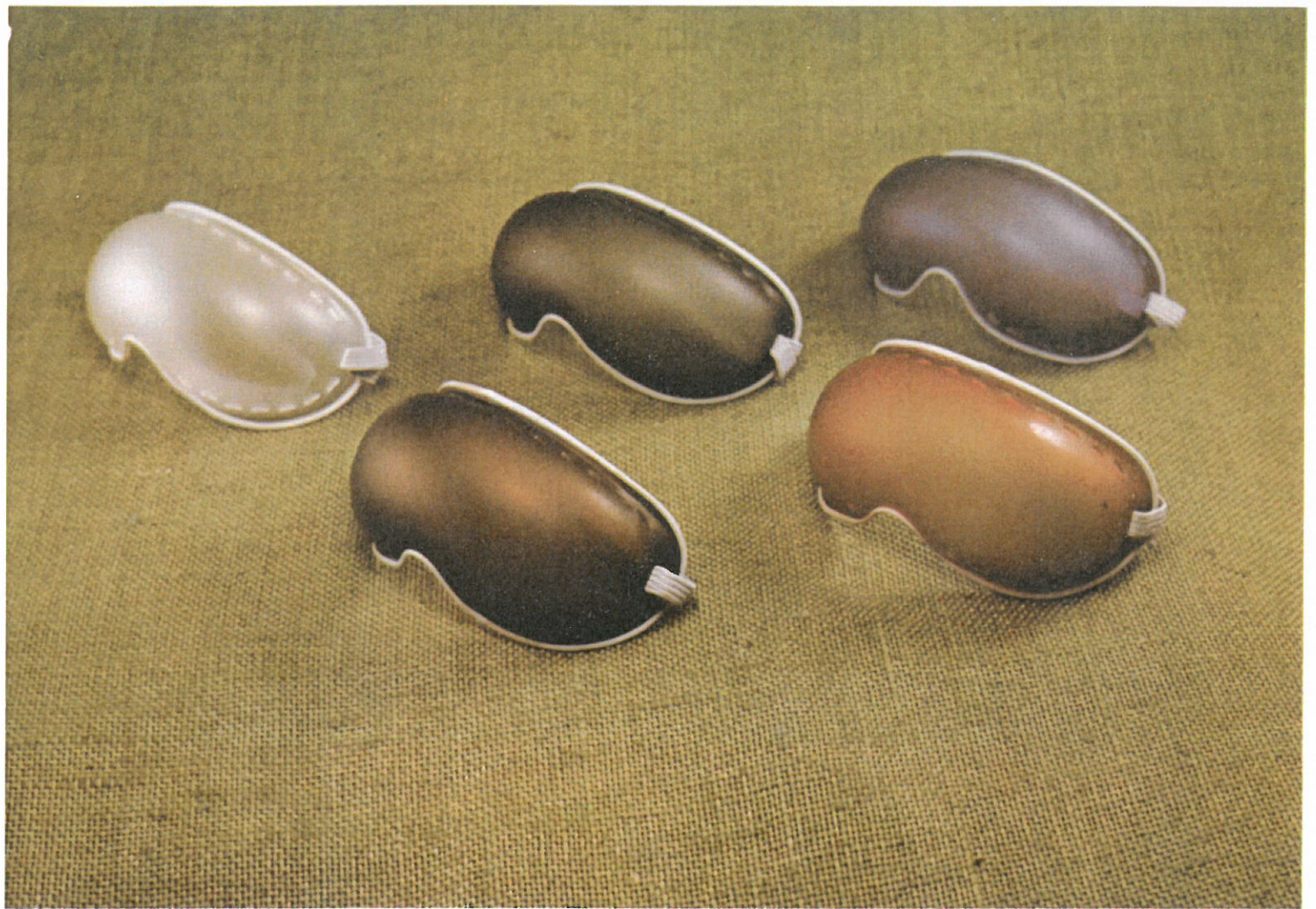
# BUBBLE VISOR

<b>CATALOG NO.</b>	<b>DESCRIPTION</b>
ACC-11000-11-01	Bubble Visor (Solid Black)
ACC-11000-11-02	Bubble Visor (White)
ACC-11000-11-03	Bubble Visor (See-Thru Smoke)

# FLAT VISOR

<b>CATALOG No.</b>	<b>DESCRIPTION</b>
ACC-11000-10-01	Flat Visor (Solid Black)
ACC-11000-10-02	Flat Visor (White)
ACC-11000-10-03	Flat Visor (See Thru Smoke)







# BUBBLE GOGGLE

A most popular eye and upper face protector for everyday cycling and other sports.

The Bubble-Goggle is all plastic with optical lense contoured to fit the upper face and afford 100% vision without distortion. The frame rests comfortably and snugly across the lower tip of the nose, offering added safety.

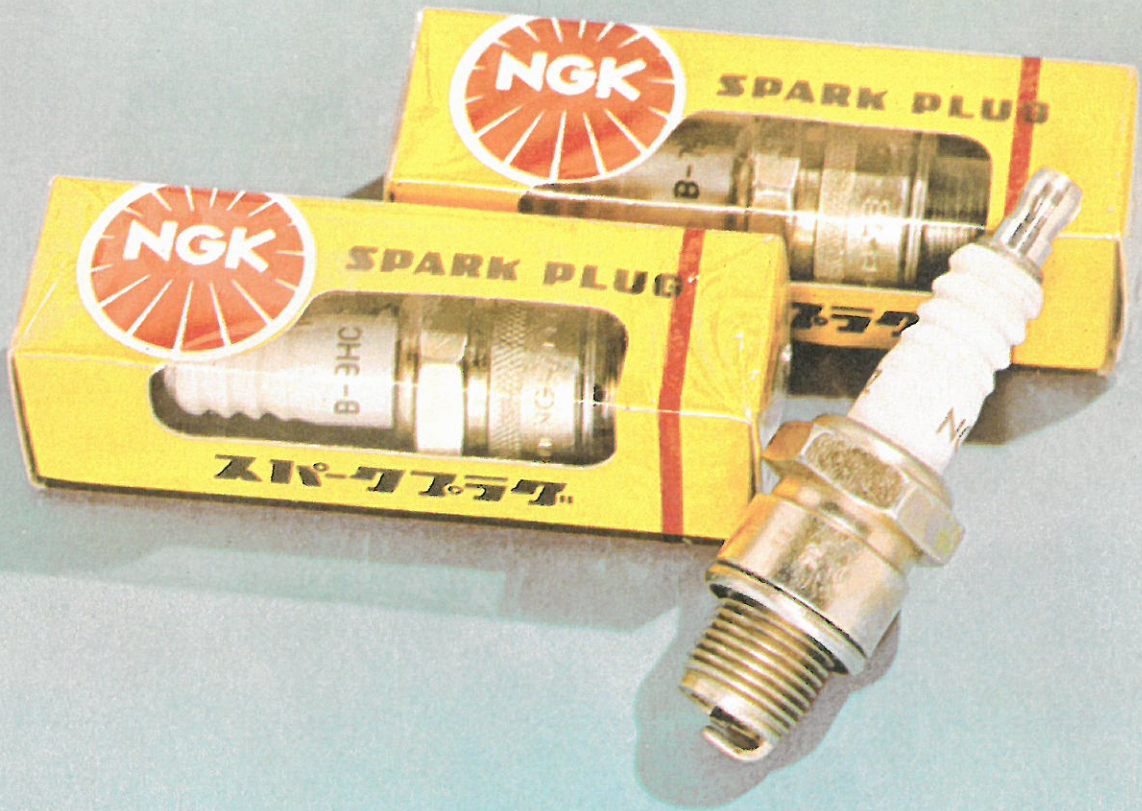
<b>CATALOG NO.</b>	<b>DESCRIPTION</b>
ACC-11000-13-01	Bubble Goggle (Clear)
ACC-11000-13-02	Bubble Goggle (Light Blue)
ACC-11000-13-03	Bubble Goggle (Light Amber)
ACC-11000-13-04	Bubble Goggle (Medium Amber)
ACC-11000-13-05	Bubble Goggle (Light Green)
ACC-11000-13-06	Bubble Goggle (Medium Green)
ACC-11000-13-07	Bubble Goggle (Yellow)

# FILTRON AIR FILTER

A revolutionary new concept in air filters, scientifically designed for maximum filtration capacity with a minimum of restriction.

<b>PART No.</b>	<b>DESCRIPTION</b>	<b>MODEL</b>
214-14451-99-00	Element	DT1







# SPARK PLUGS

N.G.K. NO.	PART NO.	N.G.K. NO.	PART NO.
B6HS	94700-00002-00	B8EN	94700-00014-00
B7HS	94700-00003-00	B9EN	94700-00016-00
B7HZ	94700-00004-00	B10EN	94700-00017-00
B8HS	94700-00006-00	B11EN	94700-00018-00
B8HN	94700-00007-00	B12EN	94700-00020-00
B6ES	94700-00009-00	B9HS	94700-00033-00
B7ES	94700-00010-00	B9ES	94700-00034-00
B8ES	94700-00013-00	B10E	94700-00036-00

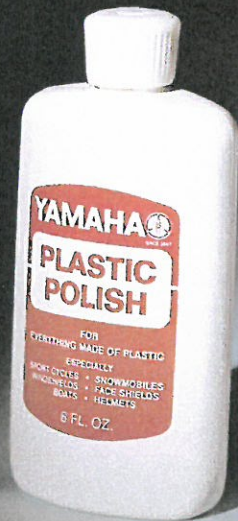
**"S" Type Plugs:** No difference in heat range. Are more resistant to fouling and dissipate electrode heat better.

---

## FE PLUS FUEL ADDITIVE

PART No.	DESCRIPTION
ACC-11000-20-00	FE Plus Fuel Additive

FE PLUS FUEL ADDITIVE IS SUPPLIED WITH 24 TUBES TO A CARTON, 6 CARTONS PER CASE. MINIMUM DEALER ORDER REQUIRED, ONE CASE.





# FE YAMALUBE OIL

**PART NO.**

ACC-11000-2100

MINIMUM ORDER: 1 CASE (24 1-Qt. Plastic Bottles)

---

# PLASTIC POLISH

<b>PART NO.</b>	<b>DESCRIPTION</b>
ACC-11000-15-00	Plastic Polish
ACC-11000-16-00	Plastic Cleaner





# BLUEWAY

Does just what it says! Removes high temperature discoloration from chrome exhaust pipes. Pretty versatile stuff. Used in industry on stainless steel welds, small area rust removal, die polish, etc. anywhere there is a need for a precise abrasive. Non-toxic, neutral Ph.

	<b>DESCRIPTION</b>	<b>REMARKS</b>
ACC-11000-18-01	Blueaway	Min. Order: 6 Btls.
ACC-11000-18-02	Blueaway	Ctn. of 30 Bottles

---

## SIMICHROME POLISHING PASTE

<b>PART No.</b>	<b>DESCRIPTION</b>	<b>REMARKS</b>
ACC-11000-19-01	Polishing Paste	Per 6 Oz. Tube
ACC-11000-19-02	Polishing Paste	Per Ctn. (24 Tubes)





# PAINT

PART No.	PAINT CAN TITLE
PNT-65000-01-46	Pearl White Base Coat—BC46
PNT-65000-01-65	Calif. Orange Base Coat—BC65
PNT-65000-01-35	Candy Silver Base Coat—SBC00
PNT-65000-03-46	Silver Pearl Top Coat—SPTC46
PNT-65000-03-65	Gold Pearl Top Coat—GPTC65
PNT-65000-02-61	Candy Yellow—CC61
PNT-65000-02-64	Candy Green—CC64
PNT-65000-02-52	Candy Orange—CC52
PNT-65000-02-62	Candy Blue—CC62
PNT-65000-04-00	Clear Top Coat—CTC00
PNT-65000-04-65	Calif. Orange Candy Top Coat—CCTC65
PNT-00000-00-71	Mandrana Orange
PNT-00000-00-74	Desert Orange

} 2 New Colors for '71

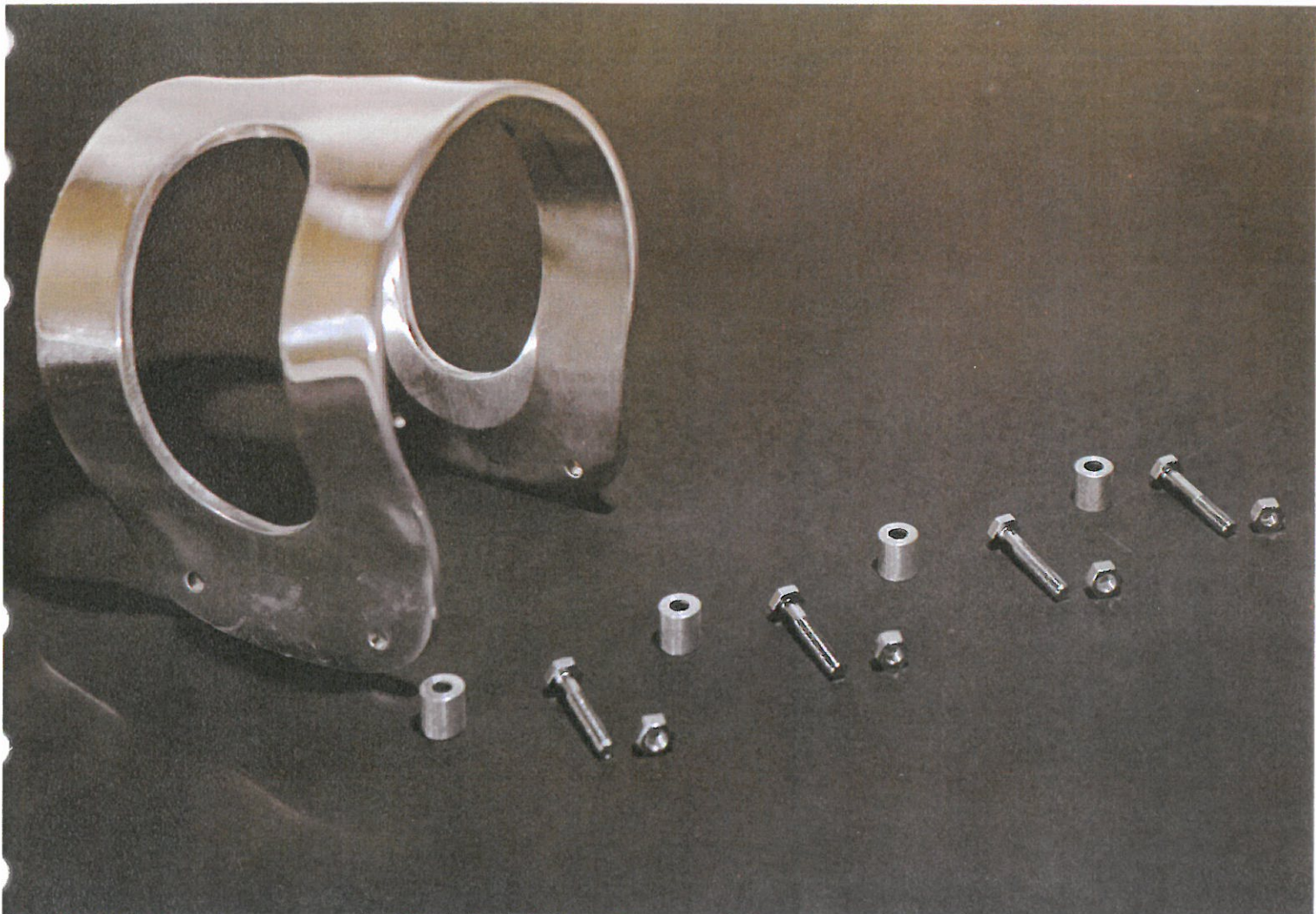
# FLAT PROOF SEALER

PART NO.	DESCRIPTION	REMARKS
ACC-11100-19-00	Flat Proof Sealer	Per Bottle

# GASKET SEALER

PART NO.	DESCRIPTION	REMARKS
ACC-11000-17-01	Gasket Sealer	2 Oz. Bottle
ACC-11000-17-02	Gasket Sealer	4 Oz. Bottle
ACC-11000-17-03	Gasket Sealer	8 Oz. Can







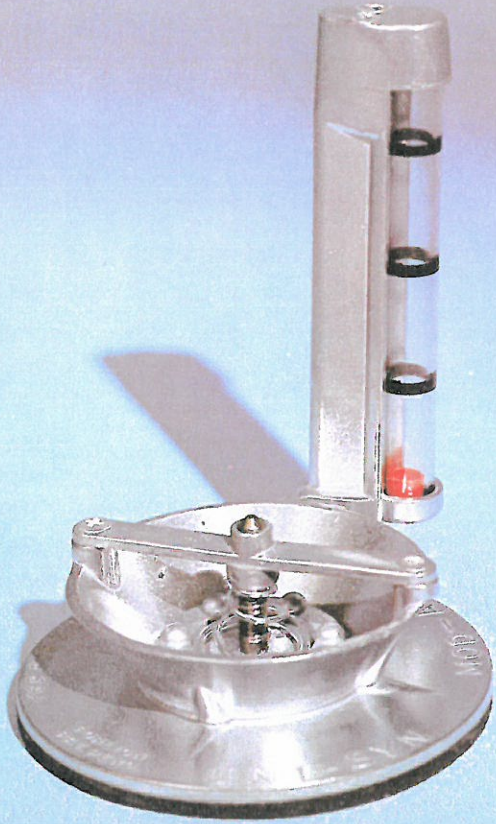
# FORK BRACES

Made of light aluminum and yet strong enough to keep the front forks stable under the roughest riding conditions. Comes with all the hardware ready to install.

<b>PART No.</b>	<b>NAME</b>	<b>MODELS</b>
ACC-11100-14-00	Fork Brace	AT1-CT1-DT1

# BATTERIES

<b>PART No.</b>	<b>MODELS</b>	<b>VOLTAGE &amp; BATT. No.</b>
102-82110-61-00	MJ2	12V MG3-12F
104-82110-20-00	G5S GS1 MG1-T YJ2 YF1 YG1 G1T G1K G1TK	6V BST2-6
116-82110-11-00	U5 DT1C DT1/DT1B CT1 AT1B/CT1B	6V 6N2-2A
118-82110-71-00	U5E/U5D	12V AYT2-12
123-82110-60-00	YL1E	12V MY3-12D
131-82110-60-00	YL1 M2C YR1 R2/R2C L2 AS1C AS2C HS-1	12V MG3-12E
137-82110-60-00	YA6/A7 YDT1	12V MW3-12D
146-82110-20-00	YD2/YD3	6V BS6-6A
156-82110-20-00	YDS2 YDS3	6V BMLT4-6
165-82110-60-00	YG5-T AT1E L2C L5T L5TB	12V MY3-12G
169-82110-60-00	DS5	12V BAT5-12
173-82110-70-00	CS1/CS1C CS3C	12V BRT3-12F
235-82110-70-00	YR3 DS6C DS6	12V 12N5-3B
116-82110-11-00	RT-1/RT-1-M	6V MV1-60
131-82110-70-00	XS1	12V





# CARBURETOR AIR FLOWMETER

The best tool yet to synchronize throttle setting between the left and right carburetors.

**PART No.**

90890-01814-00

---

## DOUBLE SEAT

**PARTS #**

248-24730-00-00

DOUBLE SEAT ASSY.

**REMARKS**

ATI, CTI SERIES

214-24730-00-00

DOUBLE SEAT ASSY.

DTI, RTI SERIES

248-24731-00-00

LEATHER ONLY FOR SEAT ASSY.

ATI, CTI SERIES

214-24731-00-00

LEATHER ONLY FOR SEAT ASSY.

DTI, RTI SERIES





# SUB-CARRIER

PART No.	DESCRIPTION	PRICE	DISC.	MODELS
116-24830-00-00	Sub-Carrier			U5 U5E U5D
122-24830-00-00	Sub-Carrier			YG1 YL1
137-24830-00-00	Sub-Carrier			YA6
156-24830-01-00	Sub-Carrier			DS3 S3C DS5 YM1 M2C
164-24830-00-00	Sub-Carrier			YL2
167-24830-00-00	Sub-Carrier			L2C L2CM
168-24830-00-00	Sub-Carrier			YR1
168-24830-01-00	Sub-Carrier			YR2C YR3
174-24830-00-00	Sub-Carrier			CS1 CS1C
183-24830-00-00	Sub-Carrier			AS1 AS2C
207-24830-00-00	Sub-Carrier			G5T
220-24830-00-00	Sub-Carrier			L5T G5S
261-24810-00-00	Sub-Carrier			AT1 CT1

---

## HANDLE BAR GRIPS

Yamaha customized handle bar grips are available in three distinctive colors, quantity packed two for the usual price of one.

Made exclusively for Yamaha in Italy, these grips fit all models and come in two different sizes.

PART No.	DESCRIPTION	COLOR	SIZE
ACC-11100-15-22	Handle grip	red	regular
ACC-11100-15-33	Handle grip	black	regular
ACC-11100-15-44	Handle grip	blue	regular
ACC-11100-16-22	Handle grip	red	long
ACC-11100-16-33	Handle grip	black	long
ACC-11100-16-44	Handle grip	blue	long





# COMPRESSION RELEASE KIT FOR DTI AND YL2CM

PART No.	DESCRIPTION	MODEL USED FOR
ACC-11100-11-00	Comp Release Kit	DTI 1/2" x 14MM
ACC-11100-10-00	Comp Release Kit	YL2CM 7/16 x 20

CAN BE COMPLETELY  
DISASSEMBLED FOR  
CLEANING

**BALL END FOR COMP**  
Also  
**PRECISION GROUND VALVE**  
To Prevent any Chance  
of Leakage

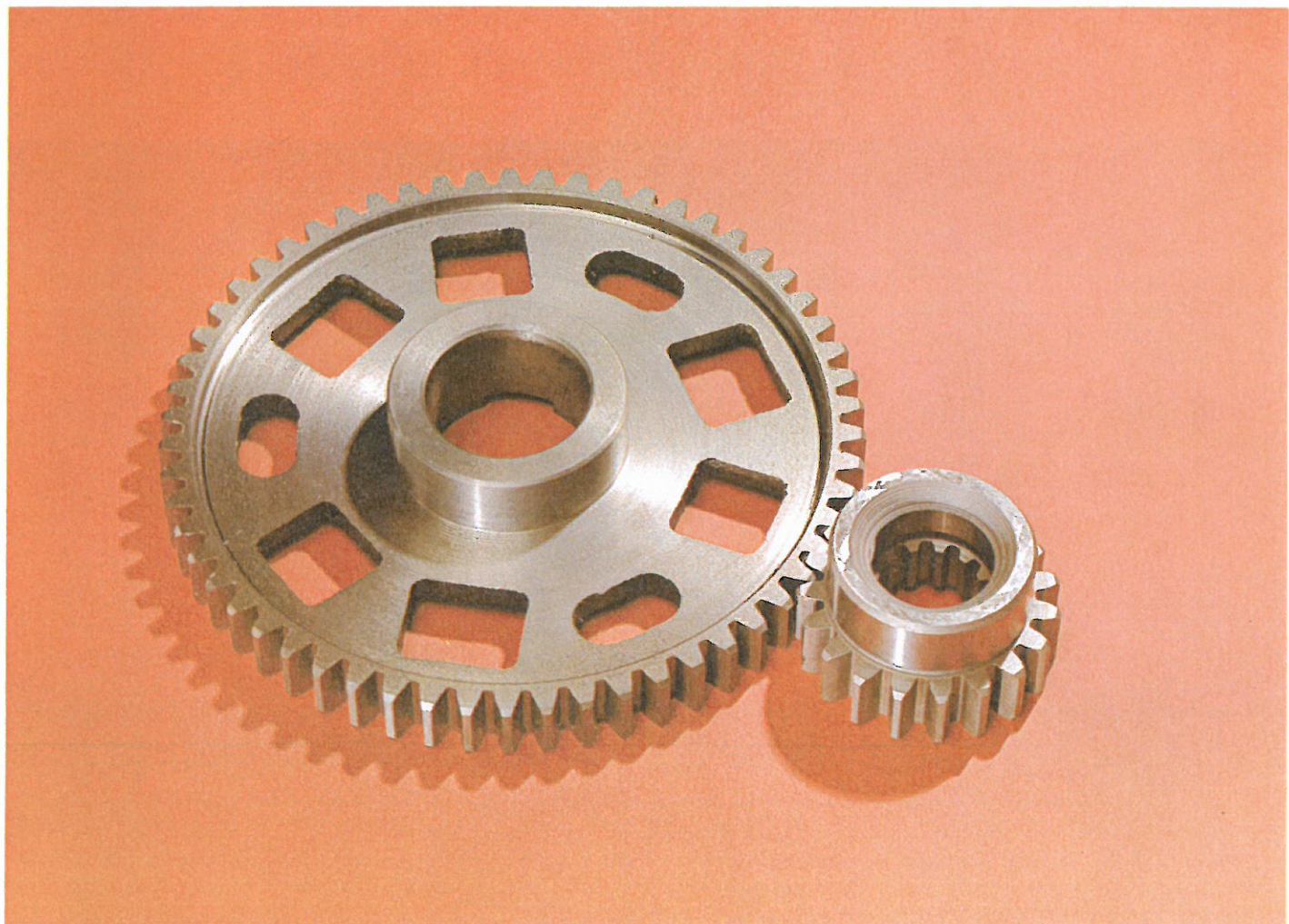
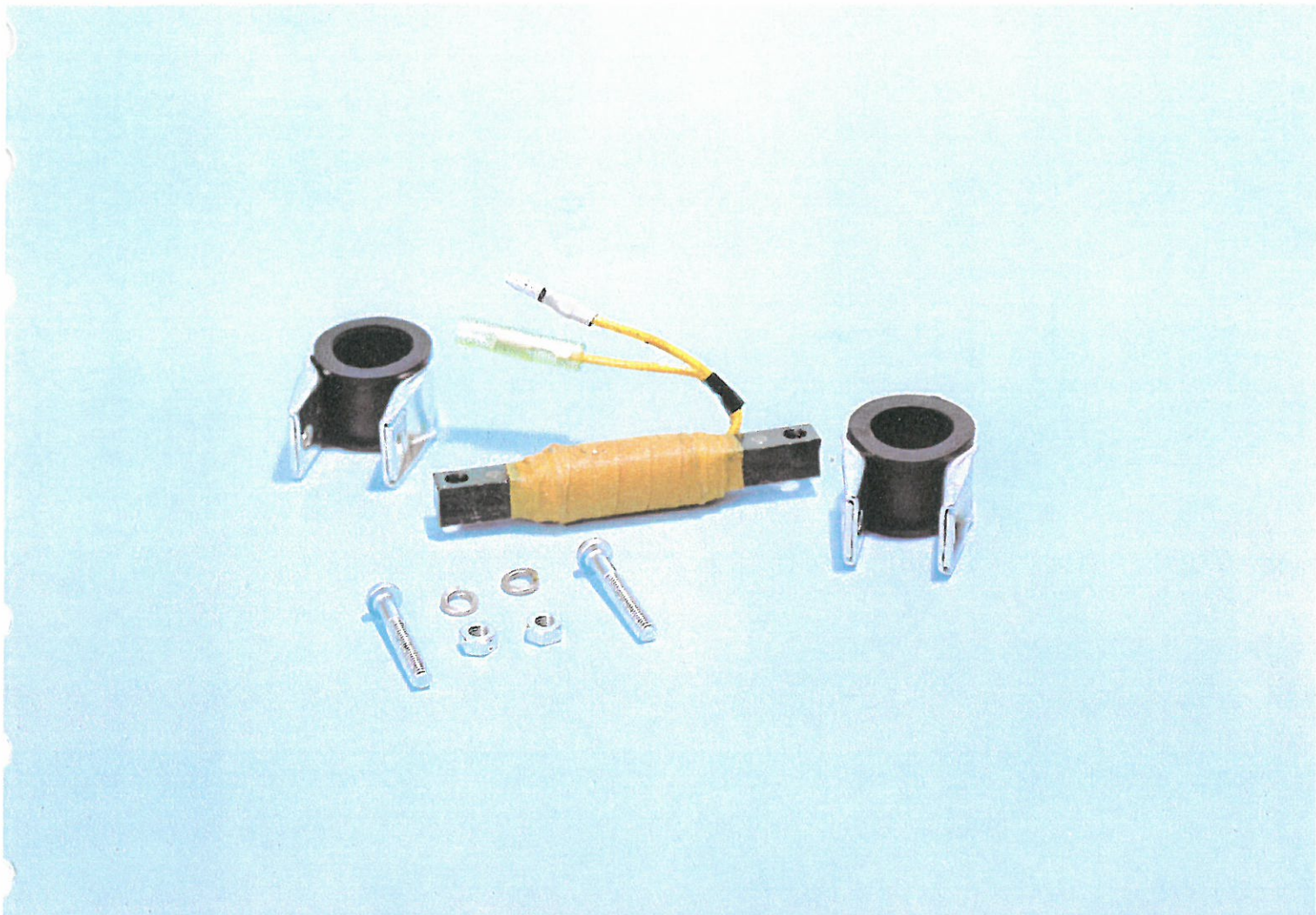
7/16 x 20  
YL2CM  
(20 Threads per Inch)

1/2" x 14MM  
DTI

---

## TACH and SPEEDO PLUGS

PART NO.	DESCRIPTION	MODEL
ACC-11100-0400	Tach and Speedo Plugs	AT1-CT1





# CHOKE COIL KIT

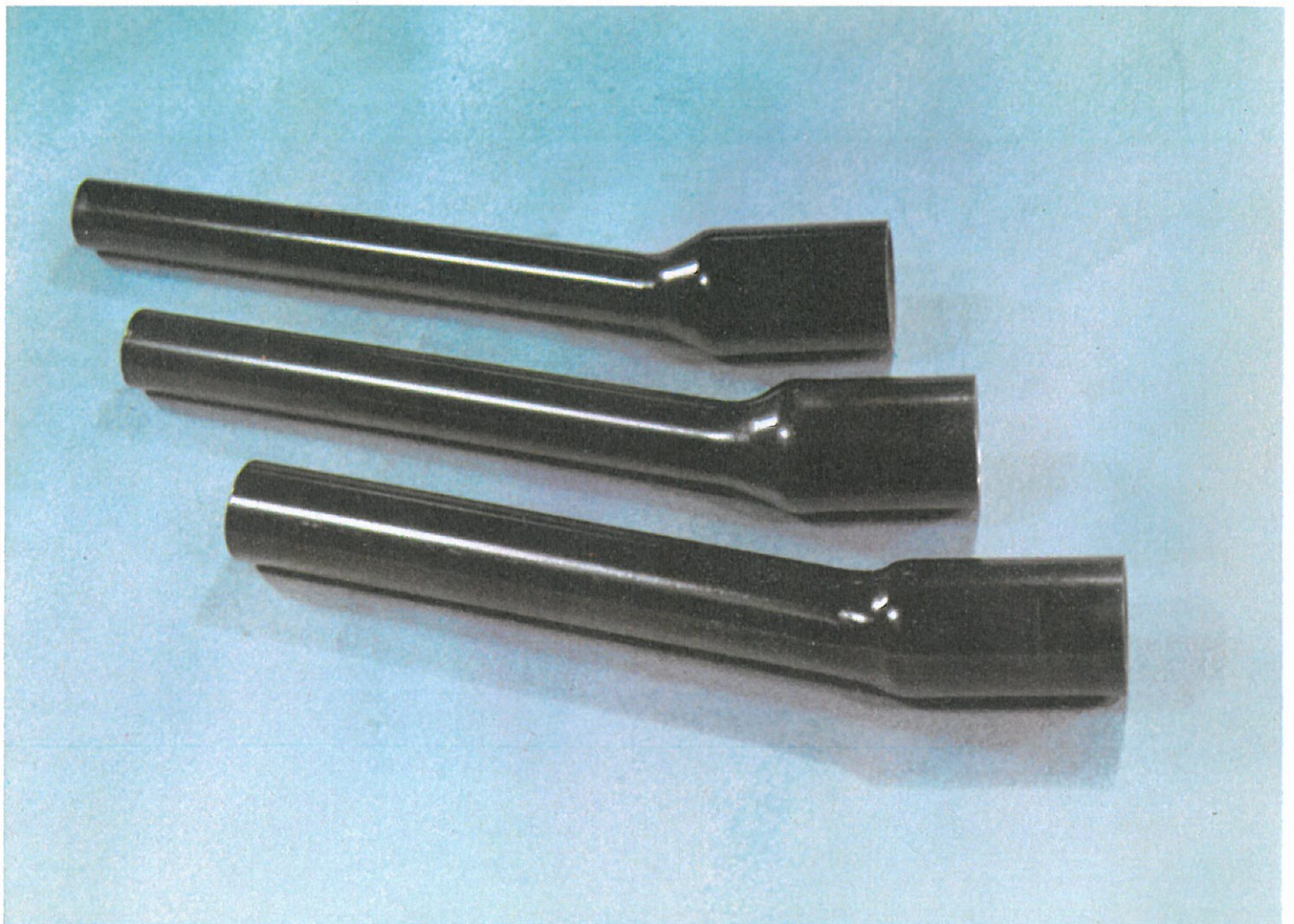
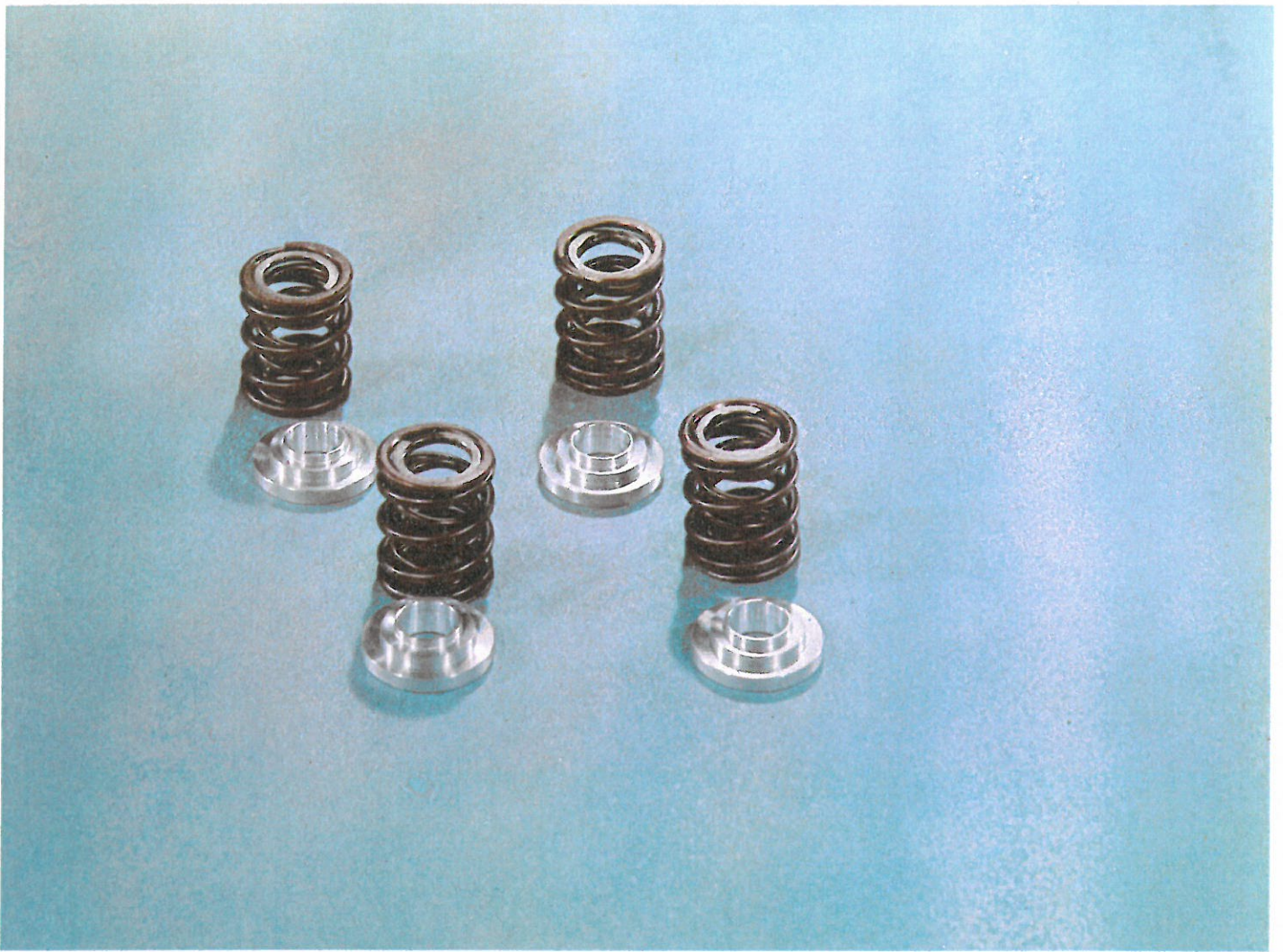
Designed especially for the DT1 in order to reduce voltage surge at high r.p.m.s. (For installation, refer to M/C Parts News No. 246 and No. 246A.)

<b>PART No.</b>	<b>DESCRIPTION</b>	<b>MODEL</b>
90890-91014-00	Choke Coil Kit	DT1A

---

# STRAIGHT CUT GEARS

<b>PART NO.</b>	<b>MODEL</b>
ACC-11100-0700	DTI
ACC-11100-0800	ATI/CTI





# VALVE SPRINGS AND SPACER KIT

**PART NO.**  
ACC-11100-18-00

**MODEL**  
XS1

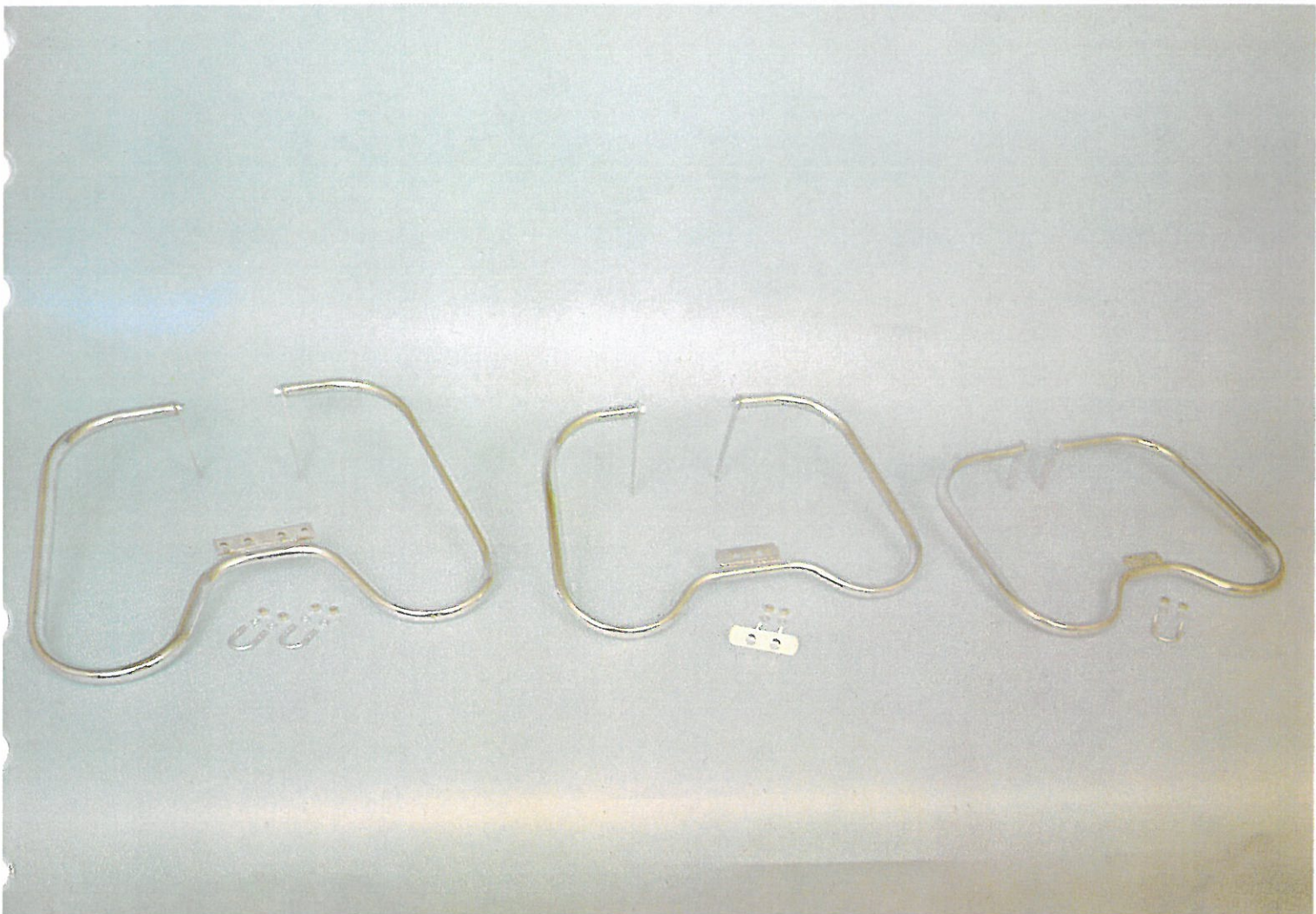
---

## EXHAUST STINGER

**PART NO.**  
ACC-11100-05-00  
ACC-11100-06-00

**DESCRIPTION**  
Exhaust Stinger  
Exhaust Stinger

**MODEL**  
AT1-CT-1  
DT1





# SAFETY BARS

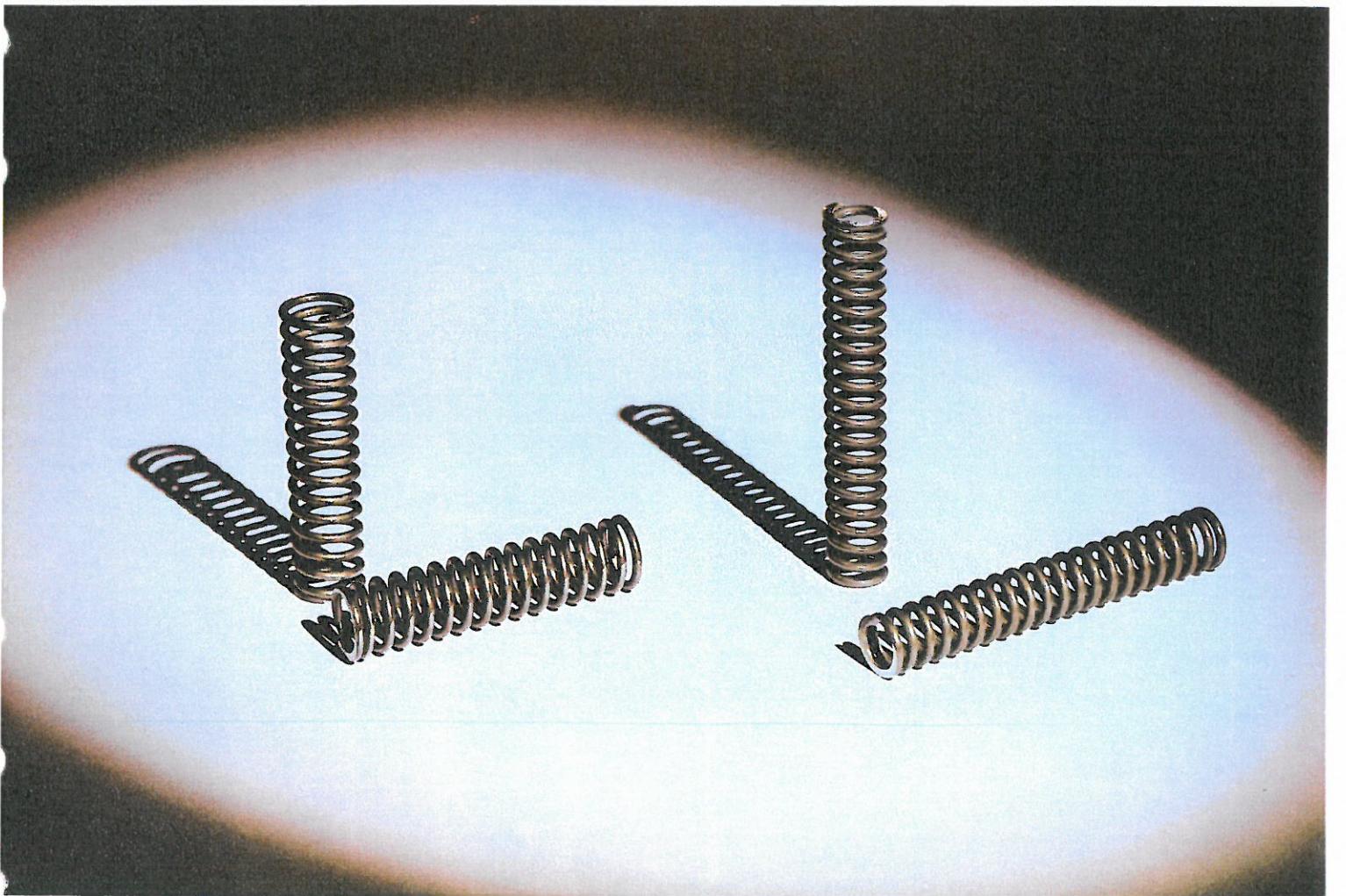
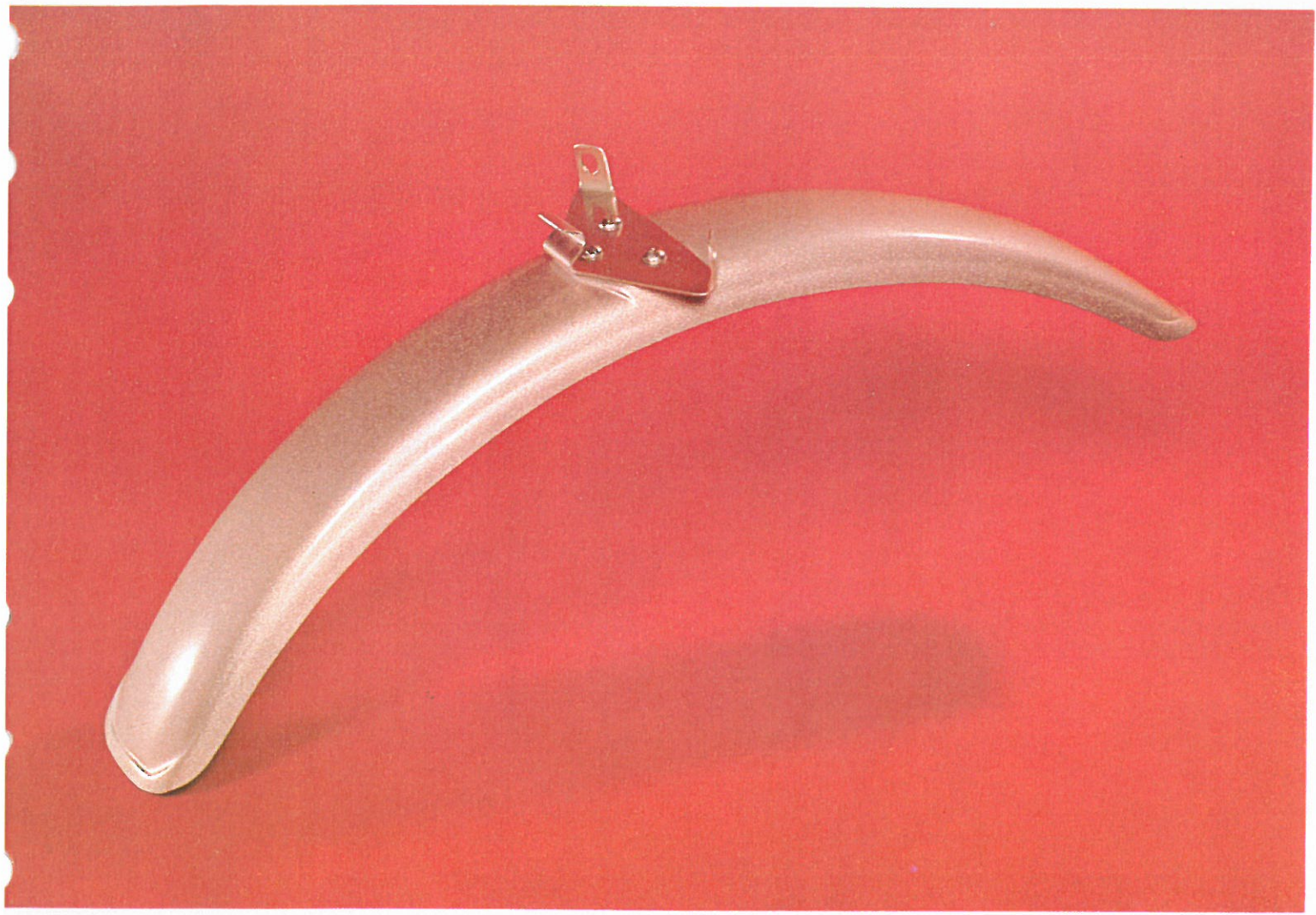
<b>PART No.</b>	<b>DESCRIPTION</b>	<b>MODELS</b>
SFB-26100-00-00	Safety Bars	AT1 CT1
SFB-17400-00-00	Safety Bars	CS1 CS1C
SFB-15600-00-00	Safety Bars	DS3 S3C DC5 YM1 MC2
SFB-21400-00-00	Safety Bars	DT1 DT1B DT1S
SFB-13400-00-00	Safety Bars	YL1 L1E
SFB-13700-00-00	Safety Bars	YA6
SFB-12200-00-00	Safety Bars	YG1 G1T GS1 GS1T
SFB-16400-00-00	Safety Bars	YL2 L2C G5S
SFB-16800-00-00	Safety Bars	YR1 YR2C YR3
SFB-25600-00-00	Safety Bars	XS1
SFB-24600-00-00	Safety Bars	DS6C B

---

## FRONT FENDER FIBER GLASS

<b>PART No.</b>	<b>MODELS</b>
214-21510-10-00	DT1 Series







# FRONT FENDER

w/BRACKET

**PART No.**

**MODELS**

ACC-11000-22-00

DT1-AT1-CT1 Series

## FORK SPRINGS

This accessory fork spring is used in place of the spacer in the upper section of the fork tube. Addition of the accessory spring increases spring action thereby decreasing the possibility of spring bind and bottoming.

<b>PART No.</b>	<b>NAME</b>	<b>MODELS</b>
ACC-11100-12-00	Fork Spring	DT1-(All)
ACC-11100-13-00	Fork Spring	AT1-CT1

# TIRES

PART No.	DESCRIPTION & SIZE	MODELS
94122-16004-00	Front Tire 225x16	MJ2 MF2
94122-16005-00	Rear Tire 225x16	MJ2 MF2
94122-17008-00	Front Tire 225x17	YJ2 YF1 U5 U5E
94122-17009-00	Rear Tire 225x17	YJ2 YF1 U5 U5E
94122-17072-00	Front Tire WSW	U5E—Lady Yamaha
94122-17073-00	Rear Tire WSW	U5E—Lady Yamaha
94125-16010-00	Tire 250x16	MJ2-T; G1T; GS1-T
94125-17011-00	Front Tire 250x17	YG1 G1K GS1 YL1
94125-17012-00	Rear Tire 250x17	YG1 G1K GS1 YL1
		G5S (F & R)
94125-17015-00	Knobby Tire 250x17	G5T
94125-18019-00	Front Tire 250x18	YL2 CS1
94125-18020-00	Rear Tire 250x18	YL2 AS1C(F) AS2C(F)
94127-17077-00	Front Tire 275x17	L5T
94127-18024-00	Front Tire 275x18	DS2
94127-18025-00	Tire 275x18	AS2C(R) CS1(R)
		CS1C(F) CS3C(F)
94127-18064-00	Rear Tire 275x18	AS1C
94127-21071-00	Front Tire 275x21	DT1 DT1B
94130-16027-00	Front Tire 300x16	YA6
94130-16028-00	Rear Tire 300x16	YA6

## TIRES — Continued

PART No.	DESCRIPTION & SIZE	MODELS
94130-17066-00	Rear Tire 300x17	L5T
94130-18038-00	Front Tire 300x18	DS3C M2C CS1C(R)
94130-18039-00	Front Tire 300x18	DS2/3 YM1 YR3 DS5
94130-18041-00	Tire 300x18	L2C (F & R)
94130-18073-00	Front Tire 300x18	AT1E AT1B
94132-16045-00	Front Tire 325x16	YD3
94132-16046-00	Rear Tire 325x16	YD3
94132-18049-00	Rear Tire 325x18	DS3 YM1 DS5
94132-18072-00	Rear Tire 325x18	DS6B
94132-18074-00	Rear Tire 325x18	AT1E AT1M(F) CT1(F)
		CT1B(F) AT1B
94132-19063-00	Front Tire 325x19	DT1 DT1B
94132-19084-00	Front Tire 325x19	XS1
94135-18050-00	Rear Tire 350x18	DS3C-YM2C
94135-18055-00	Rear Tire K-70	YR1/2/2C/3
94135-18079-00	Rear Tire 350x18	AT1M-CT1/B
94140-18062-00	Rear Tire 400x18	DT1-DT1B
94140-18070-00	Rear Tire 400x18	DT1-DT1B (Knobby)
94140-18082-00	Rear Tire 400x18	XS1





## SPEEDOMETER KIT

PART No.	DESCRIPTION	REMARKS
807-83510-09-00	Speedometer Kit	SL396
90890-91007-00	Speedometer Kit	SL338-B, SW396



# STARTER KIT

PART No.	DESCRIPTION	
807-81000-00-00	Starter Kit	SL338, SL396
810-81000-00-00	Starter Kit	SL338-B, SW396
812-81000-00-00	Starter Kit	SL292







## CYLINDER SLEEVES

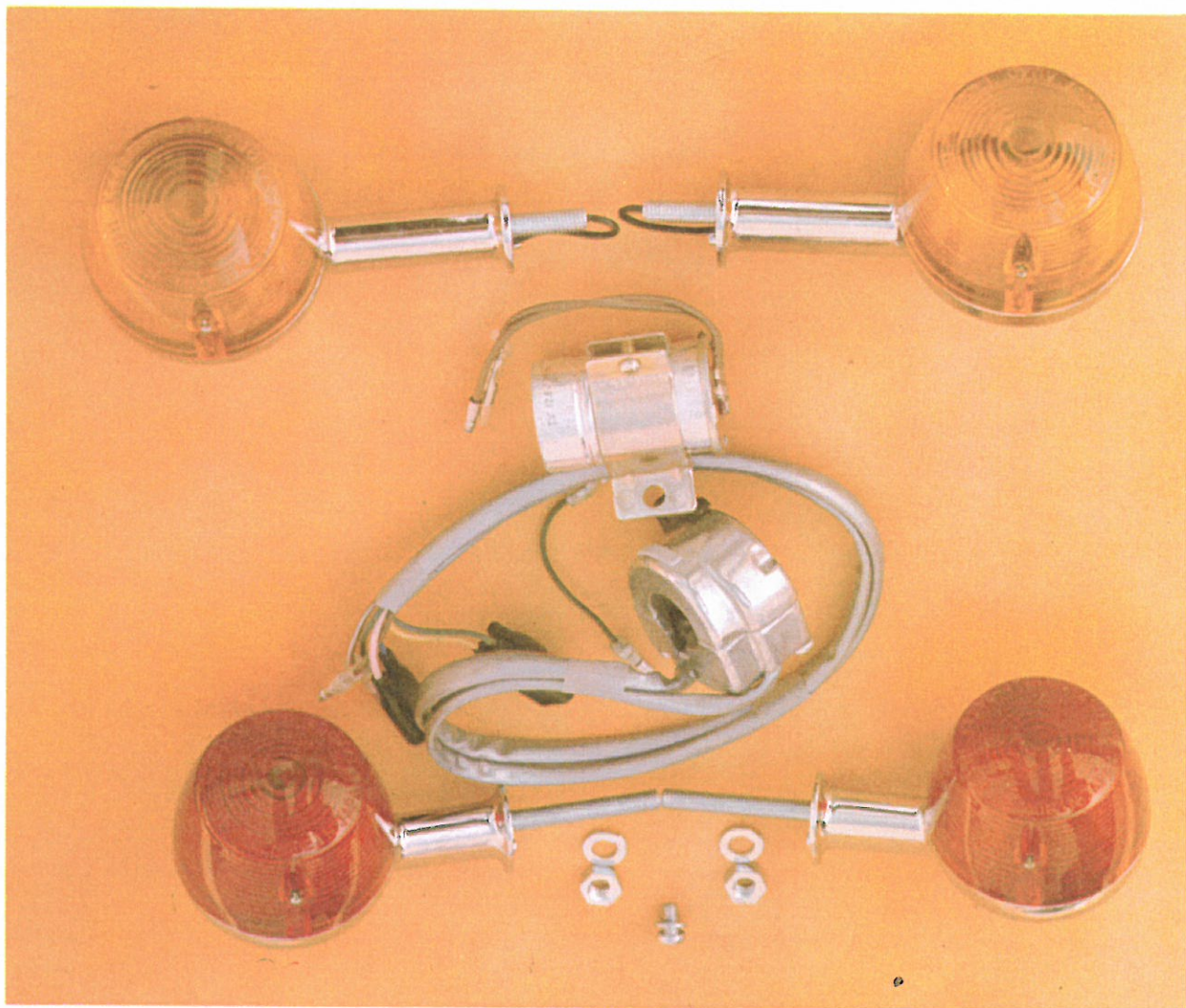
<b>PART NO.</b>	<b>DESCRIPTION</b>
ACC-11100-01-00	Cyl. Sleeve (DT1)
ACC-11100-02-00	Cyl. Sleeve (CT1)

# CARBURETOR ADAPTOR

PART NO.	DESCRIPTION
ACC-11100-03-00	Carb. Manifold Adaptor







## TURN SIGNAL KITS

Part No.	Description	Models
166.00000.50 00	TURN SIGNAL KIT	L2-L3C
168.00000.50 00	TURN SIGNAL KIT	YR1
170.00000.50 00	TURN SIGNAL KIT	DS5.M2C
174.00000.50 00	TURN SIGNAL KIT	CS1-AS1C
211.00000.50 00	TURN SIGNAL KIT	YR2C.YR3
232.00000.50 00	TURN SIGNAL KIT	G6S
233.00000.50 00	TURN SIGNAL KIT	DT1B-C
234.00000.50 00	TURN SIGNAL KIT	L5T-A
235.00000.50 00	TURN SIGNAL KIT	DS6B
251.00000.50 00	TURN SIGNAL KIT	CT1B
256.00000.50 00	TURN SIGNAL KIT	XS1
261.00000.50 00	TURN SIGNAL KIT	AT1-B
273.00000.50 00	TURN SIGNAL KIT	CS3C.AS2C
275.00000.50 00	TURN SIGNAL KIT	RT1
277.00000.50 00	TURN SIGNAL KIT	HT1

24.95



## SNOWMOBILE COVER

A new, heavier-duty snowmobile cover will be available. Material thickness and strength have been increased. Same color scheme.

806-77920-09-00

SL338

806-77920-00-00

SL338-B, (GP396, SL292, SS433, SR433)

807-77920-09-00

SL396

807-77920-00-00

SW396 (SW433)

802-77920-00-00

SL351

**NOTE:** The 806-77920-00-00 cover is made for the SL338B but it can also be used for the models noted in parenthesis, however it will not fit these alternate models as perfectly as the SL338B. This also is true for the 807-77920-00-00 cover in relation to the SW433.



# MENS ONE PIECE SNOWSUIT

## DOMESTIC MANUFACTURE

(WATERPROOF)

The outer shell of this fashion tailored suit is 100% Urethane coated black Nylon. The body lining is 100% red Nylon taffeta and the inner lining is 100% fortel fiberfill (6.5 oz. wt.).

A heavy gauge zipper extends from the neck to the base of the left leg. Includes such features as a zipper pocket located on the left side of the chest, elastic foot straps to maintain the pant legs at ankle length and elasticized fabric at the wrists for snug fitting sleeves. The silky black exterior is complemented with the red and white chest and sleeve striping and round Yamaha logo patch.

Available in sizes 38 thru 46

<b>PART NO.</b>	<b>DESCRIPTION</b>
90890-91002-38	Men's One-Piece Snowsuit — Size 38
90890-91002-40	Men's One-Piece Snowsuit — Size 40
90890-91002-42	Men's One-Piece Snowsuit — Size 42
90890-91002-44	Men's One-Piece Snowsuit — Size 44
90890-91002-46	Men's One-Piece Snowsuit — Size 46





## MENS ONE PIECE SNOWSUIT (IMPORT)

Our new factory import with reinforced seams and elastic bands. Black urethane coated Nylon outer shell accented with the traditional Yamaha red and white striping. Features red quilted lining, "fuzzy" inner collar, full zipper removable hood, zipper pocket with double snap flap. Left and right side zipper openings for easy access to conventional pants pockets and full zipper leg openings.

These high styled suits are available in sizes small, medium and large.

PART NO.	DESCRIPTION
90890-91001-01	Men's One-Piece Snowsuit — Small
90890-91001-02	Men's One-Piece Snowsuit — Medium
90890-91001-03	Men's One-Piece Snowsuit — Large



# SNOWSUITS

Fashioned in black nylon with white and red accent striping these attractive, durable suits are available only in the medium size. Manufactured from quality material with heavy, quilted insulation these practical suits are a must for any driver or passenger.

PART No.	DESCRIPTION
ACC-01200-02-02	Snowsuit — Medium





## MITTENS

BEAUTIFULLY STYLED FROM WEATHER - PROOF URETHANE COATED NYLON and tastefully appointed with the red and white striping to complement the Yamaha Snowsuit. Top grade leather covers the palm area extending from wrist to fingertips. A heavy duty Talon zipper runs from sleeve to wrist and an elastic top keeps the sleeving snug to the arm. "Made in Glovetown, U.S.A."

<b>MITTEN PART NO.</b>	<b>SIZE</b>
90890-91006-01	Small
90890-91006-02	Medium
90890-91006-03	Large
90890-91006-04	Ex-Large
*ACC112-0008-00	Mitten Kit



# SNOW BOOTS

These sturdy crafted boots feature a rubber body with a Urethane coated fabric extending up the calf area of the leg. Inside is a thick, warm liner which is completely removable from the boot. A strong zipper extends from the top of the boot down to the body. A strap and buckle have been strategically located to insure a snug fit.

"THESE BOOTS ARE MADE FOR RIDING."

Available in Men's Sizes 7 through 12

PART NO.	DESCRIPTION
90890-91005-07	Men's Snow Boot — Size 7
90890-91005-08	Men's Snow Boot — Size 8
90890-91005-09	Men's Snow Boot — Size 9
90890-91005-10	Men's Snow Boot — Size 10
90890-91005-11	Men's Snow Boot — Size 11
90890-91005-12	Men's Snow Boot — Size 12

