

RT 2 ENDURO

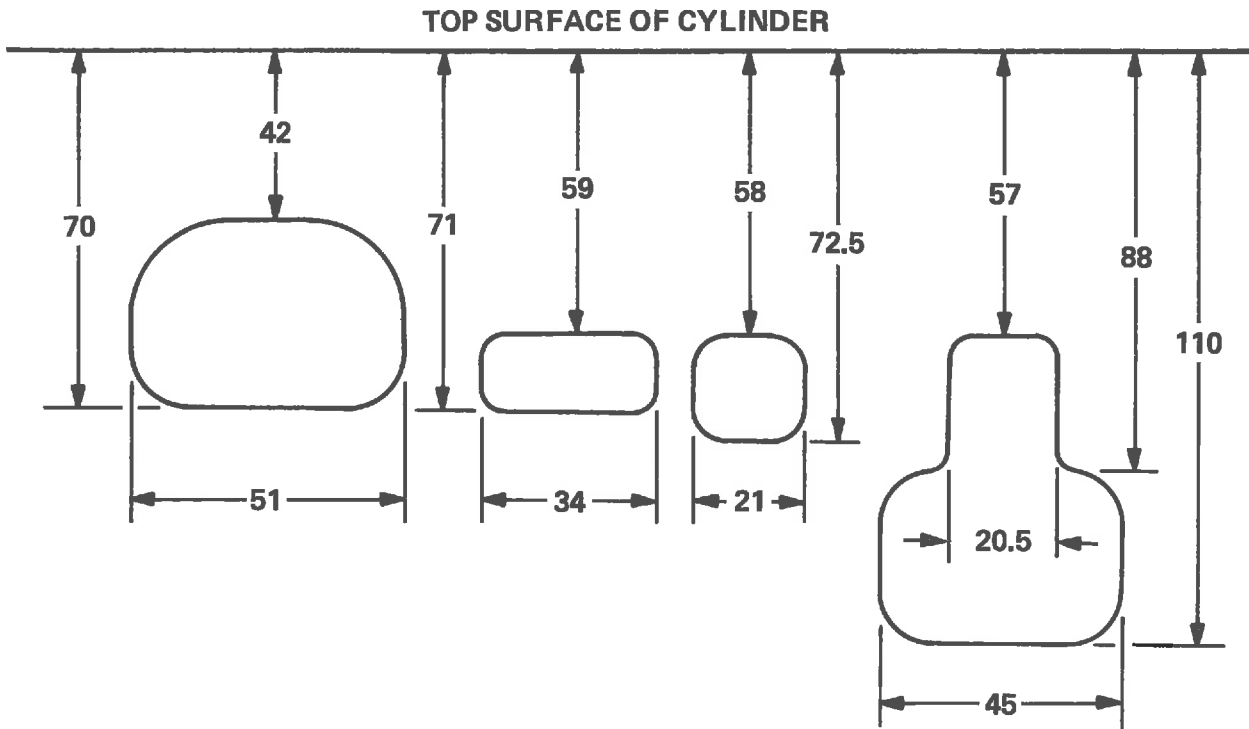
Displacement: 351cc
 Bore and Stroke: 80 x 70mm
 Number of Cylinders: 1
 Use: Street and Trail
 Cylinder Head Volume: 49cc
 P/N 308-11111-00-00
 Compression Ratio: 6.3 to 1
 Carburetor Size: VM 32 SH
 P/N 308-14101-60-00
 Ignition Timing: 2.9mm BTDC
 Spark Plug Heat Range: NGK B 9 ES

Special Parts:

Wide Ratio Transmission

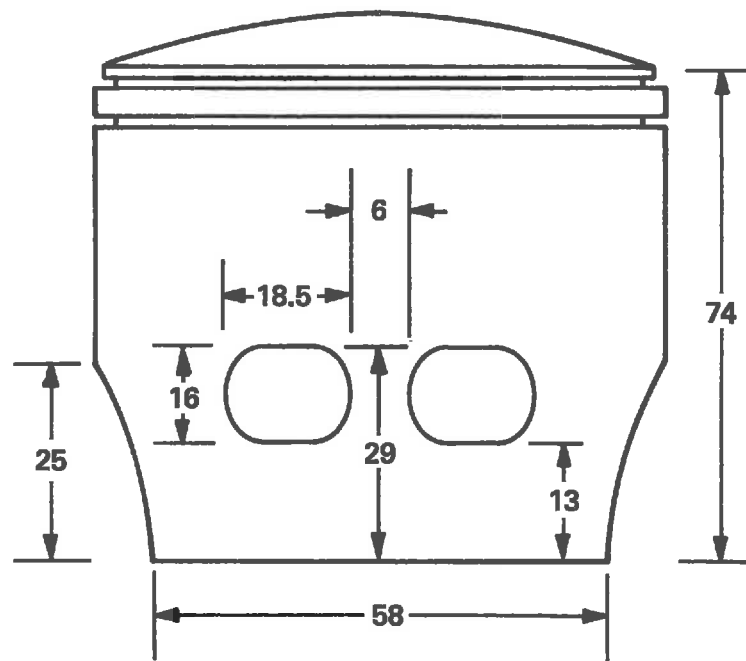
RT 2 ENDURO

Port Diagram
Cylinder Part No. 308-11311-01-00
All Dimensions in Millimeters:
Tolerance: $\pm 0.5\text{mm}$



RT 2 ENDURO

Piston Diagram
Piston Part No. 308-11631-01-96
All Dimensions in Millimeters:
Tolerance: $\pm 0\text{mm}$



RT 2 MOTOCROSS

Displacement: 351cc
 Bore and Stroke: 80 x 70mm
 Number of Cylinders: 1
 Use: Motocross and Scrambles
 Cylinder Head Volume: 38.4cc
 P/N 322-11111-00-00
 Compression Ratio: 7.13 to 1
 Carburetor Size: VM 34 SC
 P/N 322-14101-60-00
 Ignition Timing: 2.5mm BTDC
 Spark Plug Heat Range: NGK B 9 EN

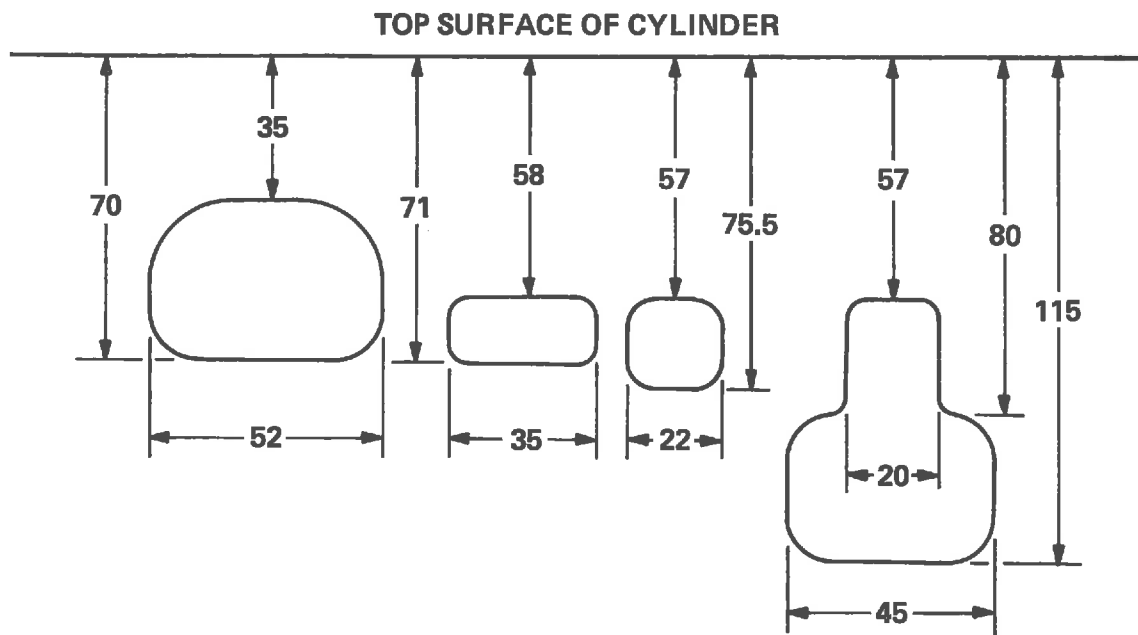
Special Parts:

Rod Bearing: Silver Cage
 P/N 93310-42541-00
 Ignition System:
 P/N 322-85500-10-00 CDI Magneto Assembly
 P/N 322-82310-10-00 Coil
 P/N 322-85540-10-00 CDI Unit Assembly
 P/N 322-85517-00-00 Wire
 Close Ratio Transmission:
 Expansion Chamber:
 P/N 322-14610-10-00

1972

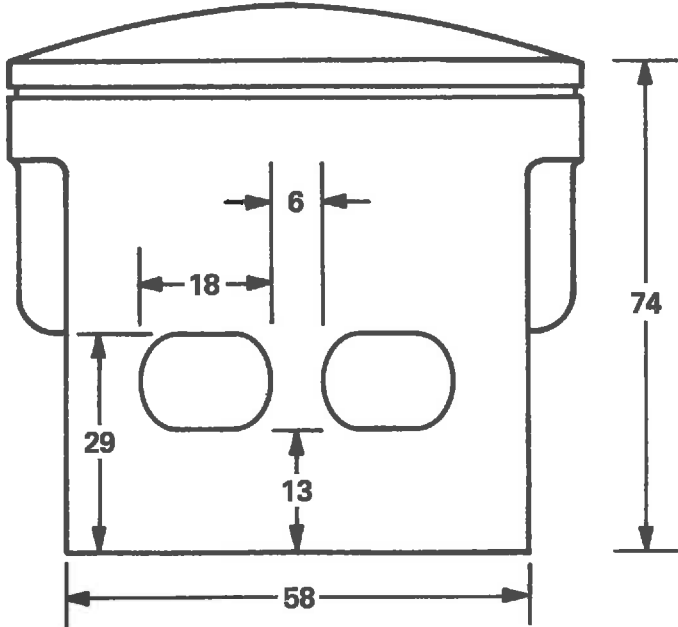
RT 2 MOTOCROSS

Port Diagram
Cylinder Part No. 322-11311-00-00
All Dimensions in Millimeters:
Tolerance: $\pm 0.5\text{mm}$

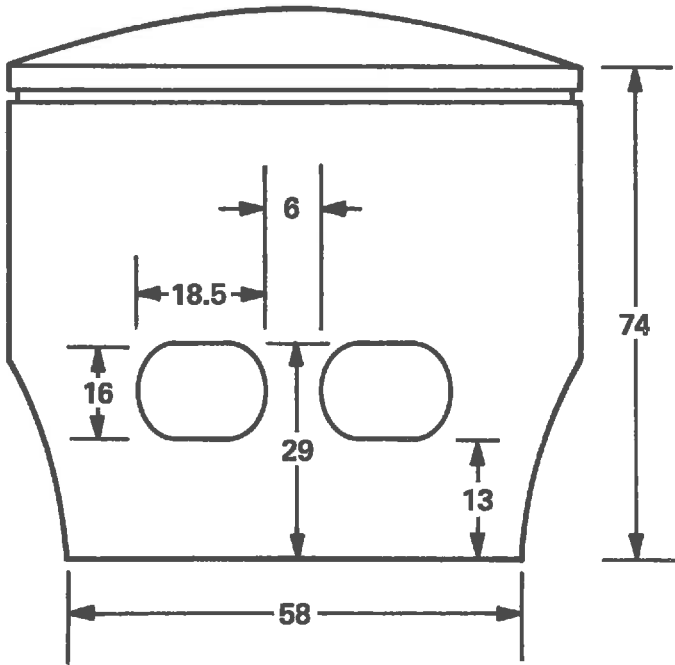


RT 2 MOTOCROSS

Piston Diagram
Piston Part No. 322-11631-02-96
All Dimensions in Millimeters:
Tolerance: $\pm 0\text{mm}$



NEW TYPE



OLD TYPE

PISTON PART NO. 322-11631-01-96

1972

RT 2 MOTOCROSS

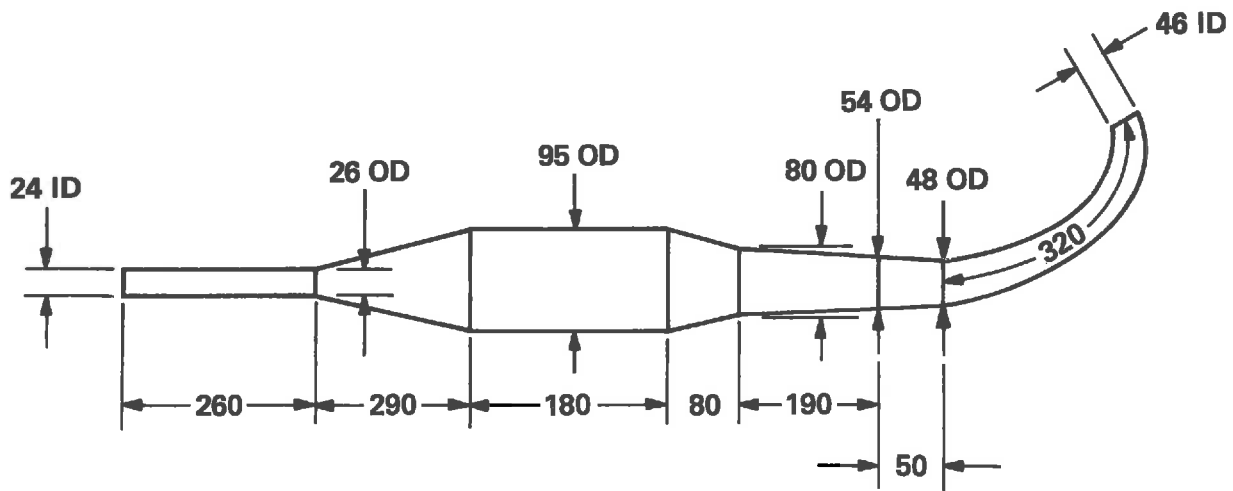
Expansion Chamber

P/N 322-14610-10-00

Material Thickness 1mm

All Dimensions in Millimeters:

Tolerance: $\pm 1.0\text{mm}$



RT 2 MOTOCROSS SPECIAL

Displacement: 351cc
 Bore and Stroke: 80 x 70mm
 Number of Cylinders: 1
 Use: Short Track, 1/2 Mile and TT
 Cylinder Head Volume: 38cc
 P/N 322-11111-00-00 Modified
 Carburetor Size:
 P/N: None VM 38 SC
 P/N: None VM 40 SC
 P/N 322-14101-60-00 VM 34 SC
 Ignition Timing: 2.8mm BTDC
 Spark Plug Heat Range: NGK B 9 EN

Special Parts:

Rod: Slotted, 2mm wide, 14mm long
 Rod Bearing: Silver Cage
 P/N 93310-42541-00
 Ignition System:
 P/N 322-85500-10-00 CDI Magneto Assembly
 P/N 322-82310-10-00 Coil
 P/N 322-85540-10-00 CDI Unit Assembly
 P/N 322-85517-00-00 Wire
 Ultra Close Ratio Transmission:
 P/N 322-17000-10-00
 Expansion Chamber:
 Special

1972

RT 2 MOTOCROSS SPECIAL

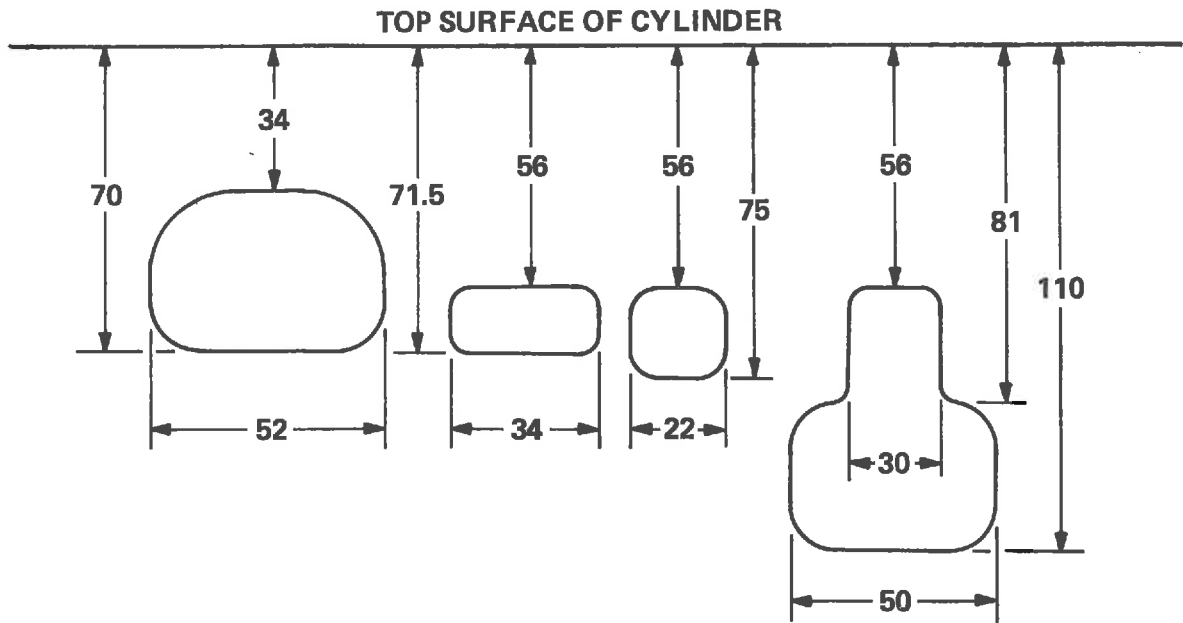
Optional Equipment:

RT 2 MOTOCROSS SPECIAL

Port Diagram

All Dimensions in Millimeters:

Tolerance: $\pm 0.5\text{mm}$



RT 2 MOTOCROSS SPECIAL

Piston Diagram

Piston RT 1 MX

Part No. 284-11631-00-95

All Dimensions in Millimeters:

Tolerance: $\pm 0\text{mm}$ **CAUTION**

After cutting off a portion of the piston skirt, be sure to check for cracks along edge of skirt and around intake ports after each race.

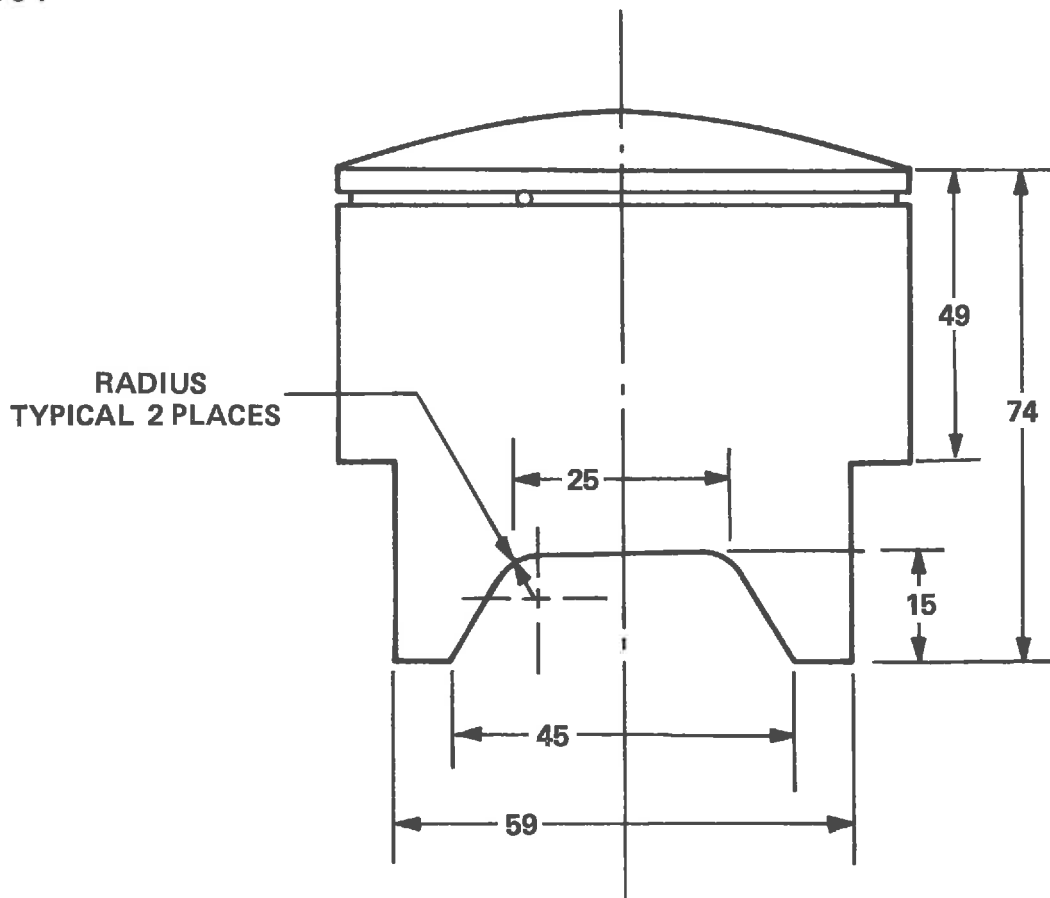
If there is evidence of cracks or extreme wear, replace piston.

NOTE

When modifying piston skirt, be sure to modify the intake side only. This will change port timing.

CAUTION

When RT 1 MX piston is used with RT 2 MX cylinder, ring gap must be relocated.



RT 2 MOTOCROSS SPECIAL

Piston Diagram
 Piston RT 2 MX
 Part No. 322-11631-02-96
 All Dimensions in Millimeters:
 Tolerance: $\pm 0\text{mm}$

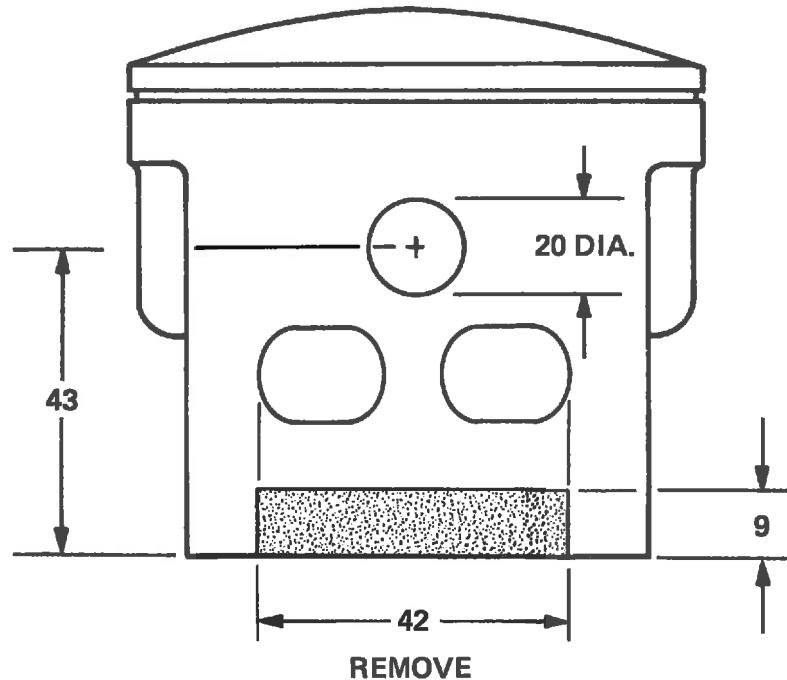
CAUTION

After cutting off a portion of the piston skirt, be sure to check for cracks along edge of skirt and around intake ports after each race.

If there is evidence of cracks or extreme wear, replace piston.

NOTE

When modifying piston skirt, be sure to modify the intake side only. This will change port timing.



1972

RT 2 MOTOCROSS SPECIAL

Expansion Chamber
Material Thickness 1mm
All Dimensions in Millimeters:
Tolerance: $\pm 1.0\text{mm}$

