

YAMAHA

XS1-B SERVICE MANUAL ***SUPPLEMENTALY***

*It is requested that corrections
be made as shown below.*



YAMAHA MOTOR CO., LTD.

GENERAL SPECIFICATIONS

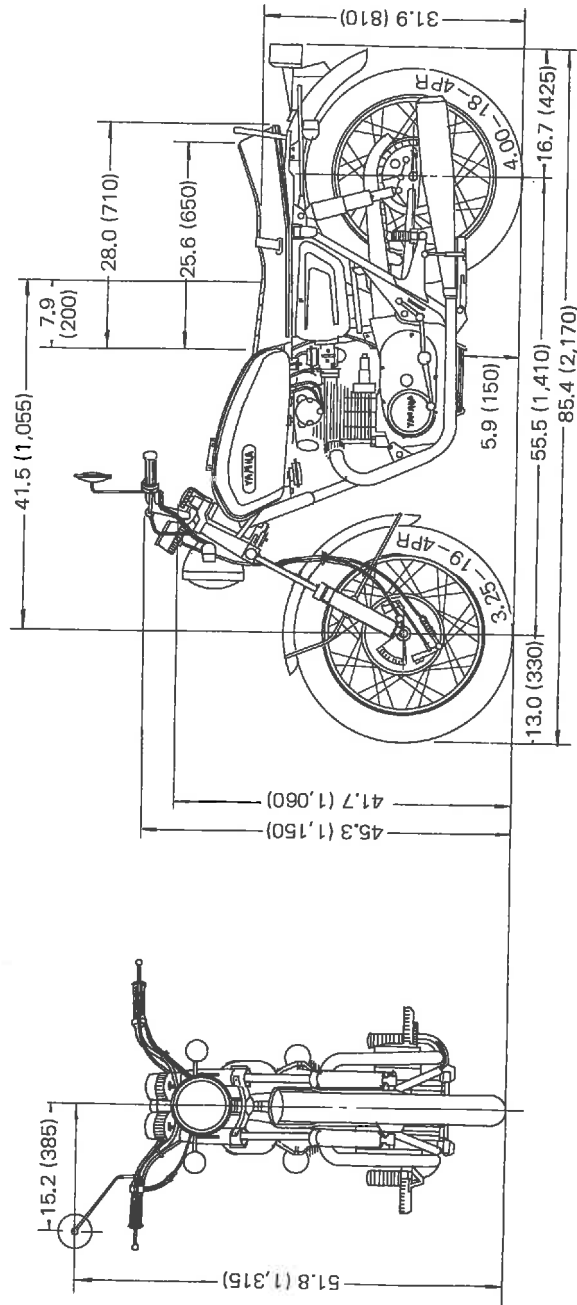
Chassis:

Front Fork Quantity (each)	223 c.c. (7.5 oz.)
----------------------------	--------------------

Lighting System:

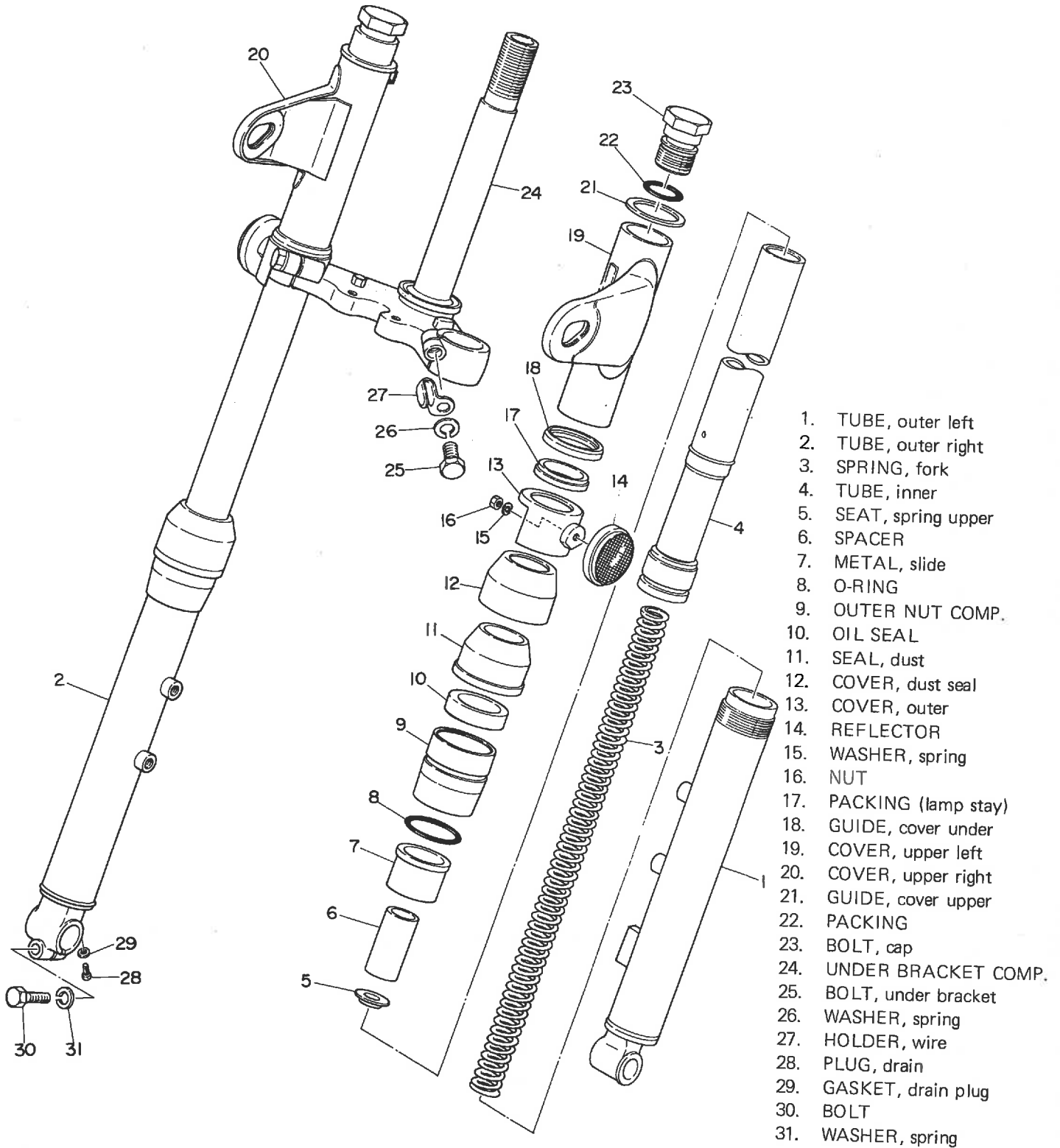
Headlight	12V - 50W/40W
Taillight	12V/8W
Stoplight	12V/27W
Neutral Light	12V/3W
Flasher Indicator Light	12V/3W
Flasher Light	12V/27W
High Beam Indicator	12V/2W
Speedometer Light	12V/3W
Tachometer Light	12V/3W

EXTERNAL VIEW



E) Front Forks

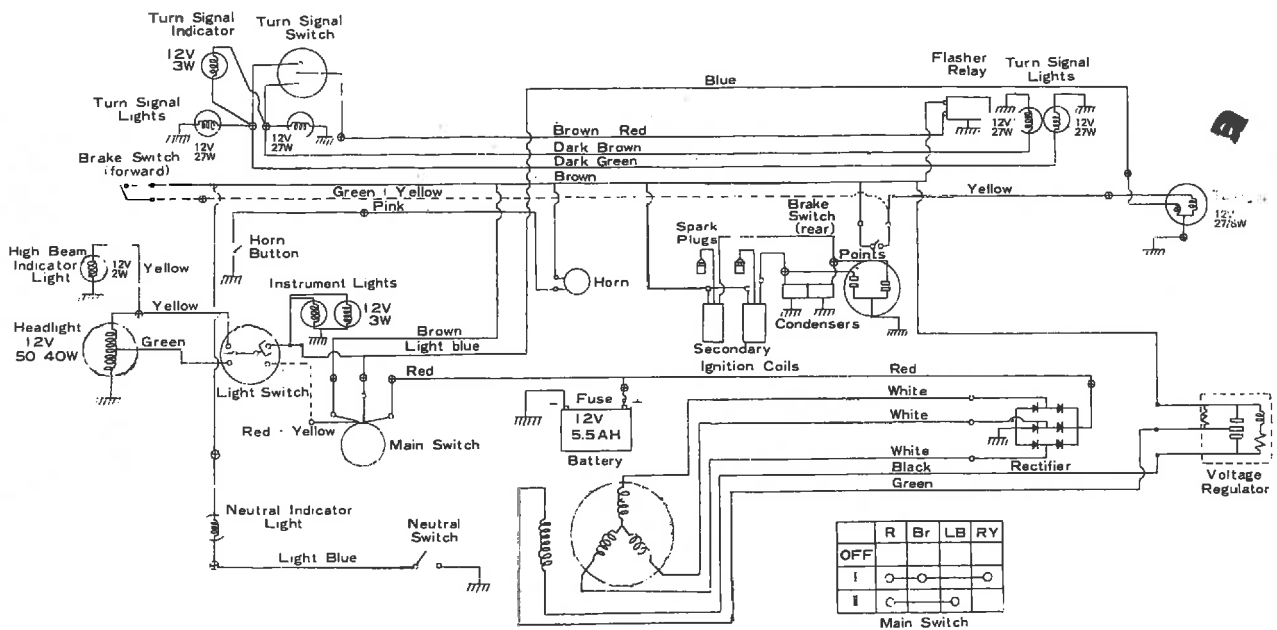
The front forks consist of two individual fork legs, each one having a two-way hydraulic dampening action and an internal spring to extend the fork leg during operation. In addition, the forks are held solidly in place by an underbracket and top bracket commonly called the triple clamp.



CHAPTER 4. ELECTRICAL

The XS1-B electrical system uses an alternator to generate voltage which is then rectified to direct current. This direct current voltage is controlled by a voltage regulator which is set to maintain a 14~15V DC constant.

When the engine is stopped, DC current to energize the lighting and ignition circuits is supplied by the battery; when running, it is supplied by the alternator/rectifier/regulator circuit. Excess voltage is shunted to the battery, if necessary, for recharging. If unneeded, the voltage regulator will decrease alternator output.



XS1-B Circuit Diagram

Color Key position	Red	Brown	Sky blue	Red & Yellow
OFF	X	X	X	X
I	O	O	X	O
II	O	X	O	X

